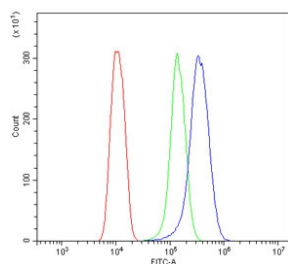


## Insig1 Antibody / Insulin-induced gene 1 (RQ6101)

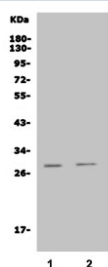
Catalog No.	Formulation	Size
RQ6101	0.5mg/ml if reconstituted with 0.2ml sterile DI water	100 ug

**Bulk quote request**

<b>Availability</b>	1-3 business days
<b>Species Reactivity</b>	Mouse, Rat
<b>Format</b>	Antigen affinity purified
<b>Clonality</b>	Polyclonal (rabbit origin)
<b>Isotype</b>	Rabbit IgG
<b>Purity</b>	Affinity purified
<b>Buffer</b>	Lyophilized from 1X PBS with 2% Trehalose and 0.025% sodium azide
<b>UniProt</b>	Q08755
<b>Applications</b>	Western Blot : 1-2ug/ml Flow Cytometry : 1-3ug/million cells
<b>Limitations</b>	This Insig1 antibody is available for research use only.



Flow cytometry testing of mouse HEPA1-6 cells with Insig1 antibody at 1ug/million cells (blocked with goat sera); Red=cells alone, Green=isotype control, Blue= Insig1 antibody.



Western blot testing of rat 1) liver and 2) lung lysate with Insig1 antibody. Predicted molecular weight ~30 kDa with a 66-70 kDa precursor.

## Description

Insulin induced gene 1, also known as INSIG1, is a protein which in humans is encoded by the INSIG1 gene. This gene encodes an endoplasmic reticulum membrane protein that regulates cholesterol metabolism, lipogenesis, and glucose homeostasis. The encoded protein has six transmembrane helices which contain an effector protein binding site. It binds the sterol-sensing domains of sterol regulatory element-binding protein (SREBP) cleavage-activating protein (SCAP) and 3-hydroxy-3-methylglutaryl-coenzyme A reductase (HMG-CoA reductase), and is essential for the sterol-mediated trafficking of these two proteins. It promotes the endoplasmic reticulum retention of SCAP and the ubiquitin-mediated degradation of HMG-CoA reductase. Alternative splicing results in multiple transcript variants.

## Application Notes

Optimal dilution of the Insig1 antibody should be determined by the researcher.

## Immunogen

Amino acids MPRLHDHVWSPSA from the rat protein were used as the immunogen for the Insig1 antibody.

## Storage

After reconstitution, the Insig1 antibody can be stored for up to one month at 4°C. For long-term, aliquot and store at -20°C. Avoid repeated freezing and thawing.