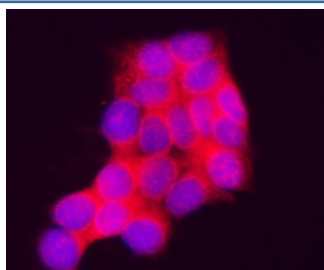


INPP4A Antibody / Inositol polyphosphate-4-phosphatase type I A (RQ7464)

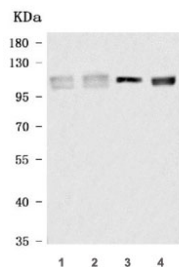
Catalog No.	Formulation	Size
RQ7464	0.5mg/ml if reconstituted with 0.2ml sterile DI water	100 ug

[Bulk quote request](#)

Availability	1-3 business days
Species Reactivity	Human, Mouse, Rat
Format	Antigen affinity purified
Clonality	Polyclonal (rabbit origin)
Isotype	Rabbit IgG
Purity	Antigen affinity purified
Buffer	Lyophilized from 1X PBS with 2% Trehalose
UniProt	Q96PE3
Localization	Nuclear, cytoplasmic, cell membrane
Applications	Western Blot : 0.5-1ug/ml Immunofluorescence : 5ug/ml Direct ELISA : 0.1-0.5ug/ml
Limitations	This INPP4A antibody is available for research use only.



Immunofluorescent staining of FFPE human MCF7 cells with INPP4A antibody (red) and DAPI nuclear stain (blue). HIER: steam section in pH6 citrate buffer for 20 min.



Western blot testing of 1) human RT4, 2) human MOLT-4, 3) rat brain and 4) mouse brain tissue lysate with INPP4A antibody. Predicted molecular weight: 106-110 kDa (multiple isoforms).

Description

Type I inositol-3,4-bisphosphate 4-phosphatase is an enzyme that in humans is encoded by the INPP4A gene. This gene encodes an Mg^{++} independent enzyme that hydrolyzes the 4-position phosphate from the inositol ring of phosphatidylinositol 3,4-bisphosphate, inositol 1,3,4-trisphosphate, and inositol 3,4-bisphosphate. Multiple transcript variants encoding distinct isoforms have been described.

Application Notes

Optimal dilution of the INPP4A antibody should be determined by the researcher.

Immunogen

E. coli-derived recombinant human protein (amino acids Q39-E935) was used as the immunogen for the INPP4A antibody.

Storage

After reconstitution, the INPP4A antibody can be stored for up to one month at 4°C. For long-term, aliquot and store at -20°C. Avoid repeated freezing and thawing.