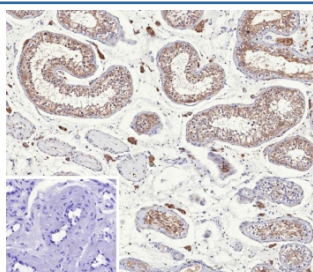


Inhibin alpha chain Antibody [clone INHA/9354] (V5751)

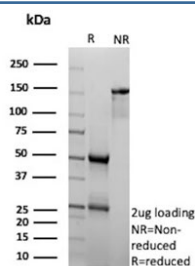
Catalog No.	Formulation	Size
V5751-100UG	0.2 mg/ml in 1X PBS with 0.1 mg/ml BSA (US sourced), 0.05% sodium azide	100 ug
V5751-20UG	0.2 mg/ml in 1X PBS with 0.1 mg/ml BSA (US sourced), 0.05% sodium azide	20 ug
V5751SAF-100UG	1 mg/ml in 1X PBS; BSA free, sodium azide free	100 ug

[Bulk quote request](#)

Availability	1-3 business days
Species Reactivity	Human
Format	Purified
Clonality	Monoclonal (mouse origin)
Isotype	Mouse IgG2a, kappa
Clone Name	INHA/9354
Purity	Protein G affinity
UniProt	P05111
Localization	Cytoplasm
Applications	Immunohistochemistry (FFPE) : 1-2ug/ml
Limitations	This Inhibin alpha chain antibody is available for research use only.



IHC staining of FFPE human testis tissue with Inhibin alpha chain antibody (clone INHA/9354). Inset: PBS used in place of primary Ab (secondary Ab negative control).
 HIER: boil tissue sections in pH 9 10mM Tris with 1mM EDTA for 20 min and allow to cool before testing.



SDS-PAGE analysis of purified, BSA-free Inhibin alpha chain antibody (clone INHA/9354) as confirmation of integrity and purity.

Description

It recognizes a 47kDa protein, which is identified as alpha sub-unit of Inhibin. It is a gonadal protein that preferentially suppresses the secretion of pituitary follicle-stimulating hormone (FSH). Inhibin comprises two subunits, Inhibin A and Inhibin B. Each subunit consists of the same alpha subunit, covalently linked to 1 of 2 distinct subunits, beta-alpha or beta-beta. Inhibin belongs to the transforming growth factor beta (TGFb) superfamily. Antibodies against Inhibin are useful in making a differentiation between adrenal cortical tumors and renal cell carcinoma.

Application Notes

Optimal dilution of the Inhibin alpha chain antibody should be determined by the researcher.

Immunogen

A recombinant partial protein from human Inhibin alpha protein (within amino acids 233-362) was used as the immunogen for the Inhibin alpha chain antibody.

Storage

Aliquot the Inhibin alpha chain antibody and store frozen at -20oC or colder. Avoid repeated freeze-thaw cycles.