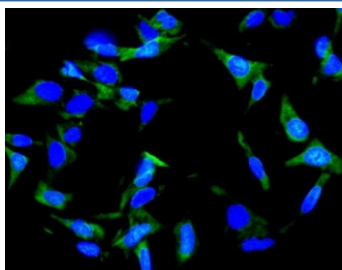


Inhibin alpha Antibody / INHA (RQ5822)

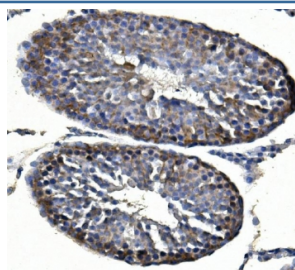
Catalog No.	Formulation	Size
RQ5822	0.5mg/ml if reconstituted with 0.2ml sterile DI water	100 ug

Bulk quote request

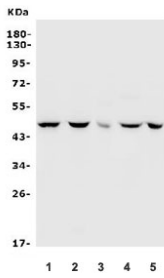
Availability	1-3 business days
Species Reactivity	Human, Mouse, Rat
Format	Antigen affinity purified
Clonality	Polyclonal (rabbit origin)
Isotype	Rabbit IgG
Purity	Affinity purified
Buffer	Lyophilized from 1X PBS with 2% Trehalose and 0.025% sodium azide
UniProt	P05111
Applications	Western Blot : 0.5-1ug/ml Immunohistochemistry : 1-2ug/ml Immunofluorescence : 2-4ug/ml Flow Cytometry : 1-3ug/million cells Direct ELISA : 0.1-0.5ug/ml
Limitations	This Inhibin alpha antibody is available for research use only.



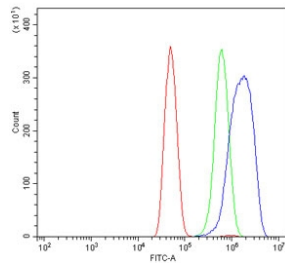
Immunofluorescent staining of FFPE human U-2 OS cells with Inhibin alpha antibody (green) and DAPI nuclear stain (blue). HIER: steam section in pH6 citrate buffer for 20 min.



IHC staining of FFPE rat testis with Inhibin alpha antibody. HIER: boil tissue sections in pH8 EDTA for 20 min and allow to cool before testing.



Western blot testing of 1) human K562, 2) human HeLa, 3) rat brain, 4) mouse spleen and 5) mouse SP2/0 lysate with Inhibin alpha antibody. Predicted molecular weight ~40 kDa.



Flow cytometry testing of human SiHa cells with Inhibin alpha antibody at 1ug/million cells (blocked with goat sera); Red=cells alone, Green=isotype control, Blue= Inhibin alpha antibody.

Description

Inhibin alpha, also known as INHA, is a protein which in humans is encoded by the INHA gene. This gene encodes a member of the TGF-beta (transforming growth factor-beta) superfamily of proteins. The encoded preproprotein is proteolytically processed to generate multiple peptide products, including the alpha subunit of the inhibin A and B protein complexes. These complexes negatively regulate follicle stimulating hormone secretion from the pituitary gland. Inhibins have also been implicated in regulating numerous cellular processes including cell proliferation, apoptosis, immune response and hormone secretion. Mutations in this gene may be associated with male infertility and premature ovarian failure in female human patients.

Application Notes

Optimal dilution of the Inhibin alpha antibody should be determined by the researcher.

Immunogen

Recombinant human protein (amino acids E254-I366) was used as the immunogen for the Inhibin alpha antibody.

Storage

After reconstitution, the Inhibin alpha antibody can be stored for up to one month at 4°C. For long-term, aliquot and store at -20°C. Avoid repeated freezing and thawing.