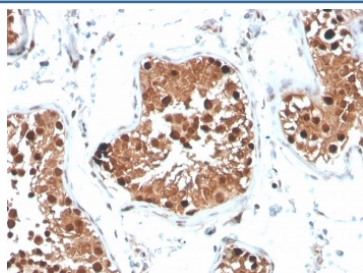


## Inhibin alpha Antibody / INHA [clone INHA/4265] (V8673)

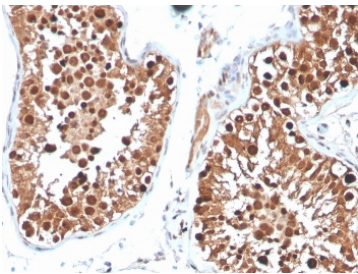
Catalog No.	Formulation	Size
V8673-100UG	0.2 mg/ml in 1X PBS with 0.1 mg/ml BSA (US sourced) and 0.05% sodium azide	100 ug
V8673-20UG	0.2 mg/ml in 1X PBS with 0.1 mg/ml BSA (US sourced) and 0.05% sodium azide	20 ug
V8673SAF-100UG	1 mg/ml in 1X PBS; BSA free, sodium azide free	100 ug

**Bulk quote request**

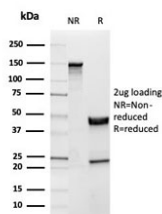
<b>Availability</b>	1-3 business days
<b>Species Reactivity</b>	Human
<b>Format</b>	Purified
<b>Clonality</b>	Monoclonal (mouse origin)
<b>Isotype</b>	Mouse IgG2a
<b>Clone Name</b>	INHA/4265
<b>Purity</b>	Protein G affinity chromatography
<b>UniProt</b>	P05111
<b>Localization</b>	Nuclear & Cytoplasmic (secreted)
<b>Applications</b>	Immunohistochemistry (FFPE) : 1-2ug/ml for 30 minutes at RT
<b>Limitations</b>	This Inhibin alpha antibody is available for research use only.



IHC staining of FFPE human testis with Inhibin alpha antibody. HIER: boil tissue sections in pH 9 10mM Tris with 1mM EDTA for 20 min and allow to cool before testing.



IHC staining of FFPE human testis with Inhibin alpha antibody. HIER: boil tissue sections in pH 9 10mM Tris with 1mM EDTA for 20 min and allow to cool before testing.



SDS-PAGE analysis of purified, BSA-free Inhibin alpha antibody as confirmation of integrity and purity.

## Description

It recognizes a 47kDa protein, which is identified as alpha sub-unit of Inhibin. It is a gonadal protein that preferentially suppresses the secretion of pituitary follicle-stimulating hormone (FSH). Inhibin comprises two subunits, Inhibin A and Inhibin B. Each subunit consists of the same superfamily. Antibodies against Inhibin are useful in making a differentiation between adrenal cortical tumors and renal cell carcinoma. Sex cord stromal tumors of the ovary as well as trophoblastic tumors also demonstrate cytoplasmic positivity. Inhibin antibody is also used to make the differential diagnosis of intra-uterine vs. ectopic pregnancy in endometrial curetting.

## Application Notes

Optimal dilution of the Inhibin alpha antibody should be determined by the researcher.

## Immunogen

A portion of amino acids 73-96 from the huma protein was used as the immunogen for the Inhibin alpha antibody.

## Storage

Store the Inhibin alpha antibody at 2-8oC (with azide) or aliquot and store at -20oC or colder (without azide).