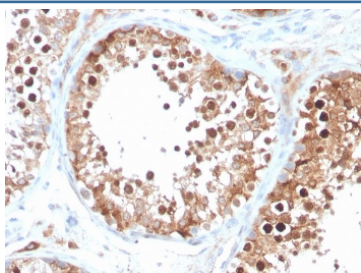


Inhibin alpha Antibody / INHA antibody [clone INHA/4266] (V8674)

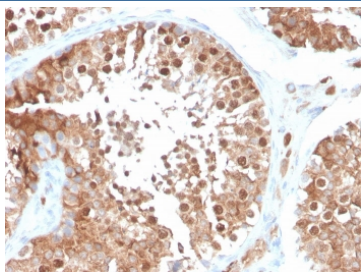
Catalog No.	Formulation	Size
V8674-100UG	0.2 mg/ml in 1X PBS with 0.1 mg/ml BSA (US sourced) and 0.05% sodium azide	100 ug
V8674-20UG	0.2 mg/ml in 1X PBS with 0.1 mg/ml BSA (US sourced) and 0.05% sodium azide	20 ug
V8674SAF-100UG	1 mg/ml in 1X PBS; BSA free, sodium azide free	100 ug

Bulk quote request

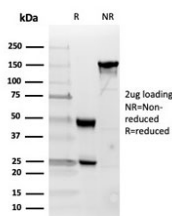
Availability	1-3 business days
Species Reactivity	Human
Format	Purified
Clonality	Monoclonal (mouse origin)
Isotype	Mouse IgG2a
Clone Name	INHA/4266
Purity	Protein G affinity chromatography
UniProt	P05111
Localization	Nuclear and Cytoplasmic (secreted)
Applications	Immunohistochemistry (FFPE) : 1-2ug/ml for 30 minutes at RT
Limitations	This Inhibin alpha antibody is available for research use only.



IHC staining of FFPE human testis with Inhibin alpha antibody (clone INHA/4266). HIER: boil tissue sections in pH 9 10mM Tris with 1mM EDTA for 20 min and allow to cool before testing.



IHC staining of FFPE human testis with Inhibin alpha antibody (clone INHA/4266). HIER: boil tissue sections in pH 9 10mM Tris with 1mM EDTA for 20 min and allow to cool before testing.



SDS-PAGE analysis of purified, BSA-free Inhibin alpha antibody as confirmation of integrity and purity.

Description

It recognizes a 47kDa protein, which is identified as alpha sub-unit of Inhibin. It is a gonadal protein that preferentially suppresses the secretion of pituitary follicle-stimulating hormone (FSH). Inhibin comprises two subunits, Inhibin A and Inhibin B. Each subunit consists of the same) superfamily. Antibodies against Inhibin are useful in making a differentiation between adrenal cortical tumors and renal cell carcinoma. Sex cord stromal tumors of the ovary as well as trophoblastic tumors also demonstrate cytoplasmic positivity. Inhibin antibody is also used to make the differential diagnosis of intra-uterine vs. ectopic pregnancy in endometrial curetting.

Application Notes

Optimal dilution of the Inhibin alpha antibody should be determined by the researcher.

Immunogen

A portion of amino acids 73-96 from the huma protein was used as the immunogen for the Inhibin alpha antibody.

Storage

Store the Inhibin alpha antibody at 2-8oC (with azide) or aliquot and store at -20oC or colder (without azide).