

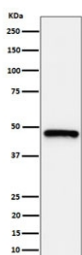
## ING1 Antibody / Inhibitor of growth 1 [clone 28I93] (RQ8631)

Catalog No.	Formulation	Size
RQ8631	Antibody in PBS with 0.02% sodium azide, 50% glycerol and 0.4-0.5mg/ml BSA	100 ug

Recombinant RABBIT MONOCLONAL

[Bulk quote request](#)

Availability	1-3 days
Species Reactivity	Human
Format	Purified
Clonality	Recombinant Rabbit Monoclonal
Isotype	Rabbit IgG
Clone Name	28I93
Purity	Affinity chromatography
UniProt	Q9UK53
Applications	Western Blot : 1:500-1:2000
Limitations	This ING1 antibody is available for research use only.



Western blot testing of human HeLa, cell lysate with ING1 antibody. Expected molecular weight ~47 kDa.

### Description

Cooperates with p53/TP53 in the negative regulatory pathway of cell growth by modulating p53-dependent transcriptional activation. Implicated as a tumor suppressor gene. [UniProt]

### Application Notes

Optimal dilution of the ING1 antibody should be determined by the researcher.

### Immunogen

A synthetic peptide from human ING1 protein was used as the immunogen for the ING1 antibody.

## Storage

Store the ING1 antibody at -20oC.