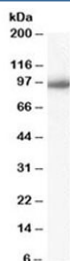


Importin beta Antibody / KPNB1 (R35754)

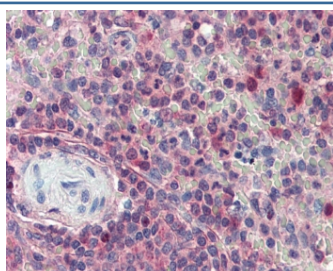
Catalog No.	Formulation	Size
R35754-100UG	0.5 mg/ml in 1X TBS, pH7.3, with 0.5% BSA (US sourced) and 0.02% sodium azide	100 ug

[Bulk quote request](#)

Availability	1-3 business days
Species Reactivity	Human
Predicted Reactivity	Cow, Dog, Mouse, Rat
Format	Antigen affinity purified
Clonality	Polyclonal (goat origin)
Isotype	Goat Ig
Purity	Antigen affinity
Gene ID	3837
Applications	Western Blot : 0.03-0.1ug/ml IHC (FFPE) : 5ug/ml ELISA (peptide) LOD : 1:32000
Limitations	This Importin beta antibody is available for research use only.



Western blot testing of Daudi cell lysate with Importin beta antibody at 0.03ug/ml.
Predicted molecular weight: ~97 kDa.



IHC testing of FFPE human spleen tissue with Importin beta antibody at 5ug/ml.
Required HIER: steam section in pH6 citrate buffer for 20 min and allow to cool prior to tetsting.

Description

Additional name(s) for this target protein: Karyopherin (importin) beta 1; Importin subunit beta 1; KPNB1

Application Notes

Optimal dilution of the Importin beta antibody should be determined by the researcher.

Immunogen

Amino acids RRSKTNKAKTLAT were used as the immunogen for this Importin beta antibody.

Storage

Aliquot and store the Importin beta antibody at -20oC.