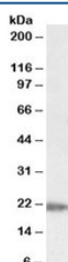


## IMP3 Antibody (R35439)

Catalog No.	Formulation	Size
R35439-100UG	0.5 mg/ml in 1X TBS, pH7.3, with 0.5% BSA (US sourced) and 0.02% sodium azide	100 ug

[Bulk quote request](#)

Availability	1-3 business days
Species Reactivity	Human
Predicted Reactivity	Cow, Dog, Mouse, Pig, Rat
Format	Antigen affinity purified
Clonality	Polyclonal (goat origin)
Isotype	Goat Ig
Purity	Antigen affinity
Gene ID	55272
Applications	Western Blot : 0.05-0.2ug/ml ELISA (peptide) LOD : 1:4000
Limitations	This IMP3 antibody is available for research use only.



Western blot testing of human liver lysate with IMP3 antibody at 0.05ug/ml. Predicted molecular weight ~21 kDa.

## Description

Additional name(s) for this target protein: Insulin like growth factor 2 mRNA binding protein 3

## Application Notes

Optimal dilution of the IMP3 antibody should be determined by the researcher.

## Immunogen

Amino acids QRREDYTRYNQLSR were used as the immunogen for this IMP3 antibody.

## Storage

Aliquot and store the IMP3 antibody at -20oC.