

## IMP3 Antibody (F51986)

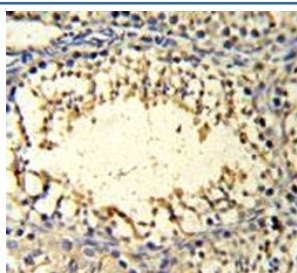
Catalog No.	Formulation	Size
F51986-0.4ML	In 1X PBS, pH 7.4, with 0.09% sodium azide	0.4 ml
F51986-0.08ML	In 1X PBS, pH 7.4, with 0.09% sodium azide	0.08 ml

[Bulk quote request](#)

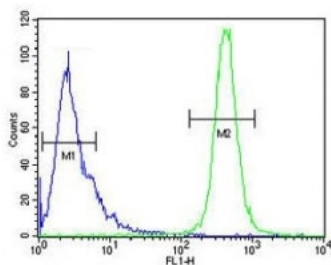
<b>Availability</b>	1-3 business days
<b>Species Reactivity</b>	Human, Mouse
<b>Format</b>	Antigen affinity purified
<b>Clonality</b>	Polyclonal (rabbit origin)
<b>Isotype</b>	Rabbit Ig
<b>Purity</b>	Antigen affinity
<b>UniProt</b>	Q9NV31
<b>Applications</b>	Western Blot : 1:1000 IHC (Paraffin) : 1:50-1:100 Flow Cytometry : 1:10-1:50
<b>Limitations</b>	This IMP3 antibody is available for research use only.



Western blot analysis of IMP3 antibody and HeLa lysate. Predicted molecular weight ~21 kDa.



IMP3 antibody IHC analysis in formalin fixed and paraffin embedded mouse testis tissue.



IMP3 antibody flow cytometric analysis of HeLa cells (green) compared to a [negative control](#) (blue). FITC-conjugated goat-anti-rabbit secondary Ab was used for the analysis.

## Description

This gene encodes the human homolog of the yeast Imp3 protein. The protein localizes to the nucleoli and interacts with the U3 snoRNP complex. The protein contains an S4 domain.

## Application Notes

Titration of the IMP3 antibody may be required due to differences in protocols and secondary/substrate sensitivity.

## Immunogen

A portion of amino acids 156-184 from the human protein was used as the immunogen for this IMP3 antibody.

## Storage

Aliquot the IMP3 antibody and store frozen at -20oC or colder. Avoid repeated freeze-thaw cycles.