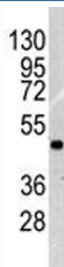


ILK1 Antibody (F50639)

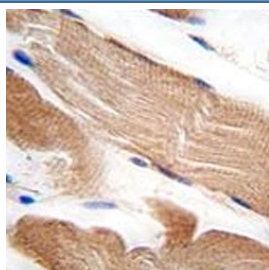
Catalog No.	Formulation	Size
F50639-0.4ML	In 1X PBS, pH 7.4, with 0.09% sodium azide	0.4 ml
F50639-0.08ML	In 1X PBS, pH 7.4, with 0.09% sodium azide	0.08 ml

[Bulk quote request](#)

Availability	1-3 business days
Species Reactivity	Human
Predicted Reactivity	Bovine, Mouse, Rat
Format	Antigen affinity purified
Clonality	Polyclonal (rabbit origin)
Isotype	Rabbit Ig
Purity	Antigen affinity
UniProt	Q13418
Localization	Cytoplasmic
Applications	Western Blot : 1:1000 IHC (Paraffin) : 1:10-1:50
Limitations	This ILK1 antibody is available for research use only.



Western blot analysis of ILK1 antibody and NCI-H460 lysate. Expected molecular weight: 51-59 kDa.



IHC analysis of FFPE human skeletal muscle tissue stained with ILK1 antibody

Description

Transduction of extracellular matrix signals through integrins influences intracellular and extracellular functions, and appears to require interaction of integrin cytoplasmic domains with cellular proteins. Integrin-linked kinase (ILK), interacts with the cytoplasmic domain of beta-1 integrin. ILK is a serine/threonine protein kinase with 4 ankyrin-like repeats, which associates with the cytoplasmic domain of beta integrins and acts as a proximal receptor kinase regulating integrin-mediated signal transduction.

Application Notes

Titration of the ILK1 antibody may be required due to differences in protocols and secondary/substrate sensitivity.

Immunogen

A portion of amino acids 151-180 from the human protein was used as the immunogen for this ILK1 antibody.

Storage

Aliquot the ILK1 antibody and store frozen at -20oC or colder. Avoid repeated freeze-thaw cycles.