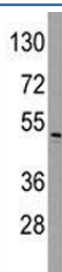


ILK Antibody (F50638)

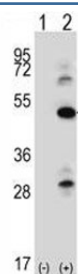
Catalog No.	Formulation	Size
F50638-0.4ML	In 1X PBS, pH 7.4, with 0.09% sodium azide	0.4 ml
F50638-0.08ML	In 1X PBS, pH 7.4, with 0.09% sodium azide	0.08 ml

Bulk quote request

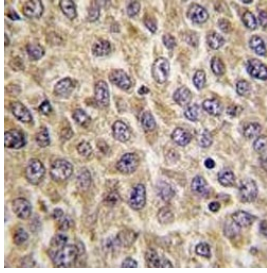
Availability	1-3 business days
Species Reactivity	Human
Predicted Reactivity	Bovine, Mouse, Rat
Format	Antigen affinity purified
Clonality	Polyclonal (rabbit origin)
Isotype	Rabbit Ig
Purity	Antigen affinity
UniProt	Q13418
Localization	Cytoplasmic
Applications	IHC (Paraffin) : 1:50-1:100 Western Blot : 1:1000
Limitations	This ILK antibody is available for research use only.



Western blot analysis of ILK antibody and HeLa lysate. Expected molecular weight: 51-59 kDa.



Western blot analysis of ILK antibody and 293 cell lysate either nontransfected (Lane 1) or transiently transfected (2) with the ILK gene. Expected molecular weight: 51-59 kDa.



IHC analysis of FFPE human hepatocarcinoma tissue stained with ILK antibody

Description

Transduction of extracellular matrix signals through integrins influences intracellular and extracellular functions, and appears to require interaction of integrin cytoplasmic domains with cellular proteins. Integrin-linked kinase (ILK), interacts with the cytoplasmic domain of beta-1 integrin. ILK is a serine/threonine protein kinase with 4 ankyrin-like repeats, which associates with the cytoplasmic domain of beta integrins and acts as a proximal receptor kinase regulating integrin-mediated signal transduction.

Application Notes

Titration of the ILK antibody may be required due to differences in protocols and secondary/substrate sensitivity.

Immunogen

A portion of amino acids 225-253 from the human protein was used as the immunogen for this ILK antibody.

Storage

Aliquot the ILK antibody and store frozen at -20oC or colder. Avoid repeated freeze-thaw cycles.