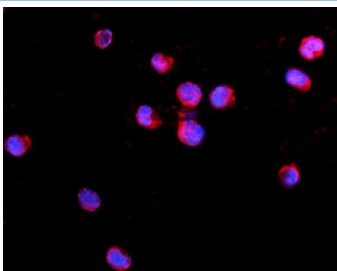


## IL2RG Antibody / IL2 Receptor gamma (RQ5821)

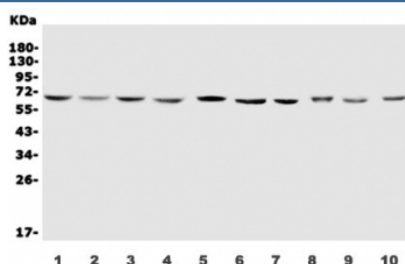
Catalog No.	Formulation	Size
RQ5821	0.5mg/ml if reconstituted with 0.2ml sterile DI water	100 ug

[Bulk quote request](#)

<b>Availability</b>	1-3 business days
<b>Species Reactivity</b>	Human, Mouse, Rat
<b>Format</b>	Antigen affinity purified
<b>Clonality</b>	Polyclonal (rabbit origin)
<b>Isotype</b>	Rabbit IgG
<b>Purity</b>	Affinity purified
<b>Buffer</b>	Lyophilized from 1X PBS with 2% Trehalose and 0.025% sodium azide
<b>UniProt</b>	P31785
<b>Applications</b>	Western Blot : 0.5-1ug/ml Immunofluorescence : 2-4ug/ml
<b>Limitations</b>	This IL2RG antibody is available for research use only.



Immunofluorescent staining of FFPE human K562 cells with IL2RG antibody (red) and DAPI nuclear stain (blue). HIER: steam section in pH6 citrate buffer for 20 min.



Western blot testing of human 1) Jurkat, 2) K562, 3) Raji, 4) U937, 5) HEK293, 6) HMY2.CIR, 7) ThP-1, 8) rat RH35, 9) rat C6 and 10) mouse HEPA1-6 lysate with IL2RG antibody. Predicted molecular weight: ~42 kDa, can be observed at 64-70 kDa.

## Description

IL2RG (INTERLEUKIN 2 RECEPTOR, GAMMA), also known as Common gamma chain or CD132, is a cytokine receptor sub-unit that is common to the receptor complexes for at least six different interleukin receptors: IL-2, IL-4, IL-7, IL-9, IL-15 and interleukin-21 receptor. IL2RG is a member of the type I cytokine receptor family expressed on most lymphocyte (white blood cell) populations, and its gene is found on the X-chromosome of mammals. By fluorescence in situ hybridization and PCR amplification of somatic cell hybrid DNAs, The IL2RG gene is mapped to Xq13.1. The IL2RG gene contains 8 exons and spans approximately 4.2 kb. And the gamma chain is an indispensable component of the functional IL2 receptor. Lymphocytes expressing the common gamma chain can form functional receptors for these cytokine proteins, which transmit signals from one cell to another and direct programs of cellular differentiation. The sharing of the gamma subunit by several receptors explains why humans and mice that lack IL2 entirely show milder symptoms than those with IL2RG deficiency.

## Application Notes

Optimal dilution of the IL2RG antibody should be determined by the researcher.

## Immunogen

Amino acids QLQKKEIHLYQTFVVQLQD from the human protein were used as the immunogen for the IL2RG antibody.

## Storage

After reconstitution, the IL2RG antibody can be stored for up to one month at 4°C. For long-term, aliquot and store at -20°C. Avoid repeated freezing and thawing.