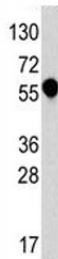


IL1R1 Antibody (F49605)

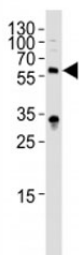
Catalog No.	Formulation	Size
F49605-0.4ML	In 1X PBS, pH 7.4, with 0.09% sodium azide	0.4 ml
F49605-0.08ML	In 1X PBS, pH 7.4, with 0.09% sodium azide	0.08 ml

[Bulk quote request](#)

Availability	1-3 business days
Species Reactivity	Human
Predicted Reactivity	Rat
Format	Antigen affinity purified
Clonality	Polyclonal (rabbit origin)
Isotype	Rabbit Ig
Purity	Antigen affinity
UniProt	P14778
Applications	Western Blot : 1:1000
Limitations	This IL1R1 antibody is available for research use only.



Western blot analysis of IL1R1 antibody and HL-60 lysate. Predicted molecular weight 60-65 kDa.



Western blot analysis of lysate from HepG2 cell line using IL1R1 antibody diluted at 1:1000. Predicted molecular weight 60-65 kDa.

Description

IL1R is a member of the interleukin 1 receptor family. An experiment with transient gene expression demonstrated that this receptor was incapable of binding to interleukin 1 alpha and interleukin 1 beta with high affinity. IL1R is a receptor for interleukin 1 family member 9 (IL1F9). Binding to the agonist leads to the activation of NF-kappa-B. The gene for this protein and four other interleukin 1 receptor family genes, including interleukin 1 receptor, type I (IL1R1), interleukin 1 receptor, type II (IL1R2), interleukin 1 receptor-like 1 (IL1RL1), and interleukin 18 receptor 1 (IL18R1), form a cytokine receptor gene cluster in a region mapped to chromosome 2q12.

Application Notes

Titration of the IL1R1 antibody may be required due to differences in protocols and secondary/substrate sensitivity.

Immunogen

A portion of amino acids 474-503 from human IL-1 Receptor type 1 was used as the immunogen for this IL1R1 antibody.

Storage

Aliquot the IL1R1 antibody and store frozen at -20oC or colder. Avoid repeated freeze-thaw cycles.