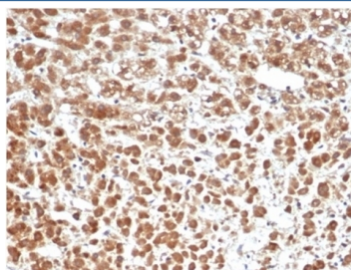


IL1 beta Antibody / IL1B [clone IL1B/6687] (V8831)

Catalog No.	Formulation	Size
V8831-100UG	0.2 mg/ml in 1X PBS with 0.1 mg/ml BSA (US sourced), 0.05% sodium azide	100 ug
V8831-20UG	0.2 mg/ml in 1X PBS with 0.1 mg/ml BSA (US sourced), 0.05% sodium azide	20 ug
V8831SAF-100UG	1 mg/ml in 1X PBS; BSA free, sodium azide free	100 ug

Bulk quote request

Availability	1-3 business days
Species Reactivity	Human
Format	Purified
Clonality	Monoclonal (mouse origin)
Isotype	Mouse IgG2b, kappa
Clone Name	IL1B/6687
Purity	Protein A/G affinity
UniProt	P01584
Localization	Cytoplasm, Extracellular (secreted)
Applications	ELISA (order BSA-free Format For Coating) : Immunohistochemistry (FFPE) : 1-2ug/ml
Limitations	This IL1 beta antibody is available for research use only.



IHC staining of FFPE human adrenal gland tissue with IL1 beta antibody (clone IL1B/6687) at 2ug/ml. HIER: boil tissue sections in pH 9 10mM Tris with 1mM EDTA for 20 min and allow to cool before testing.

Description

Recognizes a protein of 17-31kDa, identified as interleukin 1beta. It shows no cross-reaction with interleukin 1alpha. Epitopes of MAbs IL1B/463 and IL1B/6687 are different and provide a good pair for developing an ELISA. This cytokine is produced by activated macrophages as a proprotein, which is proteolytically processed to its active form by caspase 1

(CASP1/ICE). This cytokine is an important mediator of the inflammatory response, and is involved in a variety of cellular activities, including cell proliferation, differentiation, and apoptosis. The induction of cyclooxygenase-2 (PTGS2/COX2) by this cytokine in the central nervous system (CNS) is found to contribute to inflammatory pain hypersensitivity. This gene and eight other interleukin 1 family genes form a cytokine gene cluster on chromosome 2.

Application Notes

Optimal dilution of the IL1 beta antibody should be determined by the researcher.

Immunogen

A recombinant protein fragment was used as the immunogen for the IL1 beta antibody.

Storage

Aliquot the IL1 beta antibody and store frozen at -20oC or colder. Avoid repeated freeze-thaw cycles.