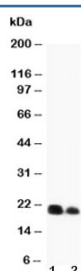


## IL-6 Antibody (R30419)

Catalog No.	Formulation	Size
R30419	0.5mg/ml if reconstituted with 0.2ml sterile DI water	100 ug

**Bulk quote request**

<b>Availability</b>	1-3 business days
<b>Species Reactivity</b>	Mouse, Rat
<b>Format</b>	Antigen affinity purified
<b>Clonality</b>	Polyclonal (rabbit origin)
<b>Isotype</b>	Rabbit IgG
<b>Purity</b>	Antigen affinity
<b>Buffer</b>	Lyophilized from 1X PBS with 2% Trehalose
<b>UniProt</b>	P20607
<b>Applications</b>	Western Blot : 0.5-1ug/ml
<b>Limitations</b>	This IL-6 antibody is available for research use only.



Western blot testing of IL-6 antibody and recombinant protein (1) 10ng, (2) 5ng

## Description

Interleukin-6 (IL-6) is a protein that in humans is encoded by the IL6 gene. IL-6 is an interleukin that acts as both a pro-inflammatory and anti-inflammatory cytokine. It is secreted by T cells and macrophages to stimulate immune response to trauma, especially burns or other tissue damage leading to inflammation. IL-6 is one of the most important mediators of fever and of the acute phase response. IL-6 is also essential for hybridoma growth and is found in many supplemental cloning media such as briclone. Bowcock et al.(1988) assigned the IL6 gene to chromosome 7p21. By in situ hybridization and Southern blot analysis of mouse-human hybrid cell lines, Sutherland et al.(1988) mapped the IL6 gene to chromosome 7p15.

## Application Notes

The stated application concentrations are suggested starting points. Titration of the IL-6 antibody may be required due to differences in protocols and secondary/substrate sensitivity.

## Immunogen

Amino acids 195-211 (KALEEFLKVTMRSTRQT) were used as the immunogen for this IL-6 antibody.

## Storage

After reconstitution, the IL-6 antibody can be stored for up to one month at 4oC. For long-term, aliquot and store at -20oC. Avoid repeated freezing and thawing.