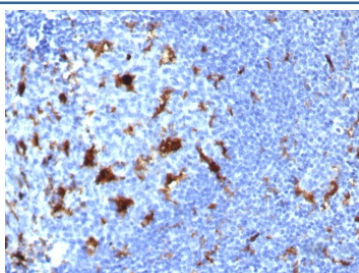


## IL-18 Antibody [clone IL18/7781] (V4196)

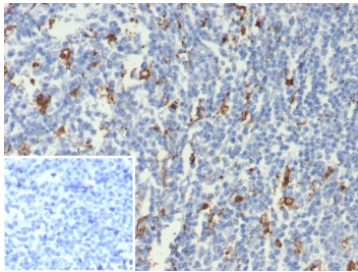
Catalog No.	Formulation	Size
V4196-100UG	0.2 mg/ml in 1X PBS with 0.1 mg/ml BSA (US sourced), 0.05% sodium azide	100 ug
V4196-20UG	0.2 mg/ml in 1X PBS with 0.1 mg/ml BSA (US sourced), 0.05% sodium azide	20 ug
V4196SAF-100UG	1 mg/ml in 1X PBS; BSA free, sodium azide free	100 ug

[Bulk quote request](#)

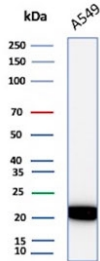
<b>Availability</b>	1-3 business days
<b>Species Reactivity</b>	Human
<b>Format</b>	Purified
<b>Clonality</b>	Monoclonal (mouse origin)
<b>Isotype</b>	Mouse IgG2, kappa
<b>Clone Name</b>	IL18/7781
<b>Purity</b>	Protein A/G affinity
<b>UniProt</b>	Q14116
<b>Localization</b>	Secreted
<b>Applications</b>	Immunohistochemistry (FFPE) : 1-2ug/ml for 30 min at RT Western Blot : 2-4ug/ml
<b>Limitations</b>	This IL-18 antibody is available for research use only.



IHC staining of FFPE human lymph node tissue with IL-18 antibody (clone IL18/7781) at 2ug/ml. HIER: boil tissue sections in pH 9 10mM Tris with 1mM EDTA for 20 min and allow to cool before testing.



IHC staining of FFPE human tonsil tissue with IL-18 antibody (clone IL18/7781) at 2ug/ml. Inset: PBS used in place of primary Ab (secondary Ab negative control). HIER: boil tissue sections in pH 9 10mM Tris with 1mM EDTA for 20 min and allow to cool before testing.



Western blot testing of human A549 cell lysate with IL-18 antibody. Predicted molecular weight ~22 kDa.

## Description

Four structurally related IL-1 receptor ligands have been described. These include three agonists designated IL-1Alpha, IL-1beta and IL-1gamma/IL-18 and a specific receptor antagonist, IL-1RA1pha. IL-1Alpha and IL-1beta play critical roles in the regulation of the immune response and inflammation, serving as activators of T and B lymphocytes and NK (natural killer) cells. IL-18 (also referred to as IL-1gamma) has been shown to augment the secretion of IFN-gamma from T lymphocytes and increase NK cell activity in spleen cells. IL-18 exhibits 19% and 12% identity with IL-1Alpha and IL-1beta respectively over the 12 beta-strands of the beta-trefoil fold domain, which is a signature feature of the IL-1 family. The unusual leader sequence of IL-18 may be analogous to the IL-1beta pro-domain which must be cleaved by the serine protease ICE for optimal secretion and biological activity. Originally described as IGIF (IFN-gamma-inducing factor), IL-18 is induced by mouse liver subsequent to challenge with lipopolysaccharide (LPS).

## Application Notes

Optimal dilution of the IL-18 antibody should be determined by the researcher.

## Immunogen

A recombinant partial protein (within amino acids 1-193) from the human protein was used as the immunogen for the IL-18 antibody.

## Storage

Aliquot the IL-18 antibody and store frozen at -20oC or colder. Avoid repeated freeze-thaw cycles.