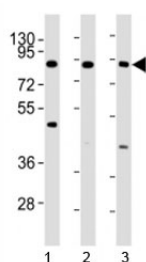


IKKb Antibody [clone 62AT216] (F40420)

Catalog No.	Formulation	Size
F40420-0.4ML	In 1X PBS, pH 7.4, with 0.09% sodium azide	0.4 ml
F40420-0.08ML	In 1X PBS, pH 7.4, with 0.09% sodium azide	0.08 ml

[Bulk quote request](#)

Availability	1-3 business days
Species Reactivity	Human
Format	Purified
Clonality	Monoclonal (mouse origin)
Isotype	Mouse IgG1
Clone Name	62AT216
Purity	Purified
UniProt	O14920
Applications	Western Blot : 1:100-1:500
Limitations	This IKKb antibody is available for research use only.



Western blot testing of IKKb antibody at 1:4000 dilution. Lane 1: HL-60 lysate; 2: HeLa lysate; 3: Jurkat lysate; Predicted molecular weight ~87 kDa.

Description

NFKB1 or NFKB2 is bound to REL, RELA, or RELB to form the NFKB complex. The NFKB complex is inhibited by I-kappa-B proteins (NFKBIA or NFKBIB), which inactivate NF-kappa-B by trapping it in the cytoplasm. Phosphorylation of serine residues on the I-kappa-B proteins by kinases (IKBKA or IKBKB) marks them for destruction via the ubiquitination pathway, thereby allowing activation of the NF-kappa-B complex. Activated NFKB complex translocates into the nucleus and binds DNA at kappa-B-binding motifs such as 5-prime GGGRNNYYCC 3-prime or 5-prime HGGARNYYCC 3-prime (where H is A, C, or T; R is an A or G purine; and Y is a C or T pyrimidine).

Application Notes

Titration of the IKKb antibody may be required due to differences in protocols and secondary/substrate sensitivity.

Immunogen

This IKKb antibody was raised using purified His-tagged recombinant full length human IKK beta.

Storage

Aliquot the IKKb antibody and store frozen at -20oC or colder. Avoid repeated freeze-thaw cycles.