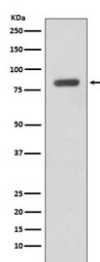


IKK beta Antibody / IKBKB [clone FOI-9] (RQ4716)

| Catalog No. | Formulation | Size |
|-------------|--|--------|
| RQ4716 | Antibody in PBS with 0.02% sodium azide, 50% glycerol and 0.4-0.5mg/ml BSA | 100 ul |

[Bulk quote request](#)

| | |
|--------------------|--|
| Availability | 1-2 weeks |
| Species Reactivity | Human |
| Format | Purified |
| Clonality | Rabbit Monoclonal |
| Isotype | Rabbit IgG |
| Clone Name | FOI-9 |
| Purity | Affinity purified |
| UniProt | O14920 |
| Applications | Western Blot : 1:500-1:2000 |
| Limitations | This IKK beta antibody is available for research use only. |



Western blot testing of human Daudi cell lysate with IKK beta antibody. Predicted molecular weight ~87 kDa.

Description

Serine kinase that plays an essential role in the NF-kappa-B signaling pathway which is activated by multiple stimuli such as inflammatory cytokines, bacterial or viral products, DNA damages or other cellular stresses. Acts as part of the canonical IKK complex in the conventional pathway of NF-kappa-B activation and phosphorylates inhibitors of NF-kappa-B on 2 critical serine residues. [UniProt]

Application Notes

Optimal dilution of the IKK beta antibody should be determined by the researcher.

Immunogen

A synthetic peptide specific to human IKK beta / IKBKB was used as the immunogen for the IKK beta antibody.

Storage

Store the IKK beta antibody at -20oC.