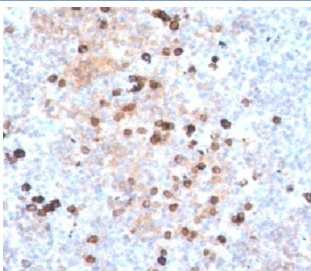


IgM Heavy Chain Antibody [clone IM373] (V2144)

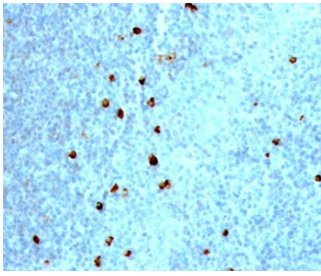
| Catalog No. | Formulation | Size |
|----------------|-------------------------------------------------------------------------------------------------|--------|
| V2144-100UG | 0.2 mg/ml in 1X PBS with 0.1 mg/ml BSA (US sourced) and 0.05% sodium azide | 100 ug |
| V2144-20UG | 0.2 mg/ml in 1X PBS with 0.1 mg/ml BSA (US sourced) and 0.05% sodium azide | 20 ug |
| V2144SAF-100UG | 1 mg/ml in 1X PBS; BSA free, sodium azide free | 100 ug |
| V2144IHC-7ML | Prediluted in 1X PBS with 0.1 mg/ml BSA (US sourced) and 0.05% sodium azide; *For IHC use only* | 7 ml |

[Bulk quote request](#)

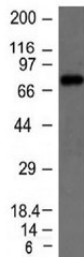
| | |
|---------------------------|-----------------------------------------------------------------------------------------------------------------------------------------------------------------------------|
| Species Reactivity | Human |
| Format | Purified |
| Clonality | Monoclonal (mouse origin) |
| Isotype | Mouse IgG2b, kappa |
| Clone Name | IM373 |
| Purity | Protein G affinity chromatography |
| Buffer | 1X PBS, pH 7.4 |
| Gene ID | 3507 |
| Localization | Cytoplasm, Cell Surface and Secreted |
| Applications | Flow Cytometry : 0.5-1ug/10 ⁶ cells Immunofluorescence : 0.5-1ug/ml Western Blot : 0.5-1ug/ml Immunohistochemistry (FFPE) : 0.5-1ug/ml for 30 min at RT |
| Limitations | This IgM heavy chain antibody is available for research use only. |



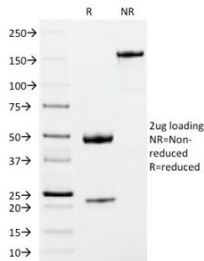
IHC testing of human tonsil stained with IgM heavy chain antibody.



IHC testing of human tonsil stained with IgM heavy chain antibody.



Western blot testing of Raji cell lysate with IgM heavy chain antibody. Expected molecular weight: 70-75 kDa.



SDS-PAGE Analysis of Purified, BSA-Free IgM Heavy Chain Antibody (clone IM373). Confirmation of Integrity and Purity of the Antibody.

Description

This antibody recognizes a protein of 75kDa, identified as the mu heavy chain of human immunoglobulins. It does not cross-react with alpha (IgA), gamma (IgG), epsilon (IgE), or delta (IgD), heavy chains, T-cells, monocytes, granulocytes, or erythrocytes. The antibody is useful in the identification of leukemias, plasmacytomas, and certain non-Hodgkin's lymphomas. The most common feature of these malignancies is the restricted expression of a single heavy chain class. Demonstration of clonality in lymphoid infiltrates indicates that the infiltrate is clonal and therefore malignant.

Application Notes

The concentration stated for each application is a general starting point. Variations in protocols, secondaries and substrates may require the antibody to be titrated up or down for optimal performance.

1. Staining of formalin-fixed tissues requires boiling tissue sections in 10mM citrate buffer, pH 6.0, for 10-20 min followed by cooling at RT for 20 minutes.
2. The prediluted format is supplied in a dropper bottle and is optimized for use in IHC. After epitope retrieval step (if required), drip mAb solution onto the tissue section and incubate at RT for 30 min.

Immunogen

Recombinant heavy chain of human IgM was used as the immunogen for this antibody.

Storage

Store the IgM heavy chain antibody at 2-8°C (with azide) or aliquot and store at -20°C or colder (without azide).

Alternate Names

AGM1; IGHM; Constant Region of Heavy Chain of IgM; Ig Mu Chain C Region, IgM Heavy Chain antibody, Mu class antibody

References (1)