

IGF1 Antibody [clone M23] (V2139)

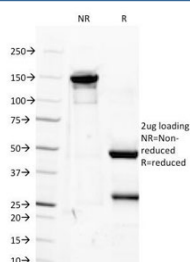
Catalog No.	Formulation	Size
V2139-100UG	0.2 mg/ml in 1X PBS with 0.1 mg/ml BSA (US sourced) and 0.05% sodium azide	100 ug
V2139-20UG	0.2 mg/ml in 1X PBS with 0.1 mg/ml BSA (US sourced) and 0.05% sodium azide	20 ug
V2139SAF-100UG	1 mg/ml in 1X PBS; BSA free, sodium azide free	100 ug



Citations (12)

[Bulk quote request](#)

Species Reactivity	Human, Mouse, Rat
Format	Purified
Clonality	Monoclonal (mouse origin)
Isotype	Mouse IgG1, kappa
Clone Name	M23
Purity	Protein G affinity chromatography
Buffer	1X PBS, pH 7.4
Gene ID	3479
Localization	Cytoplasmic (Secreted)
Applications	Flow Cytometry : 0.5-1ug/10 ⁶ cells Immunofluorescence : 1-2ug/ml In-vitro Neutralization Of Biological Activity Of IGF-1 (order BSA/sodium Azide-free Format) :
Limitations	This IGF1 antibody is available for research use only.



SDS-PAGE Analysis of Purified, BSA-Free IGF1 Antibody (clone M23). Confirmation of Integrity and Purity of the Antibody.

Description

This antibody is specific to IGF1 (Insulin like Growth Factor 1) and shows minimal cross-reaction with IGF11, Proinsulin, MSF, and Insulin. IGF1 is a polypeptide growth factor with two isoforms that are produced by alternative splicing. Isoform 1 is also known as IGF1B while isoform 2 is known as IGF1A. IGF1 stimulates the proliferation of a wide range of cell types including muscle, bone and cartilage tissue. It functions as an autocrine regulator of growth. Activation of the IGF system has emerged as a key factor for tumor progression and resistance to apoptosis in many cancers like those of breast, thyroid and colon.

Application Notes

The concentration stated for each application is a general starting point. Variations in protocols, secondaries and substrates may require the antibody to be titrated up or down for optimal performance.

Immunogen

Purified human IGF1 protein was used as the immunogen for this antibody.

Storage

Store the IGF1 antibody at 2-8oC (with azide) or aliquot and store at -20oC or colder (without azide).

References (2)