

IGF-1 Antibody (R30443)

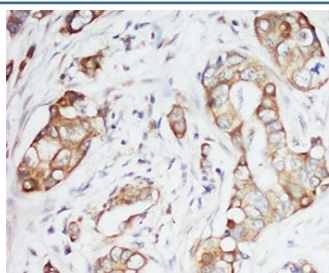
| Catalog No. | Formulation | Size |
|-------------|---|--------|
| R30443 | 0.5mg/ml if reconstituted with 0.2ml sterile DI water | 100 ug |

Bulk quote request

| | |
|---------------------------|---|
| Availability | 1-3 business days |
| Species Reactivity | Human, Mouse, Rat |
| Format | Antigen affinity purified |
| Clonality | Polyclonal (rabbit origin) |
| Isotype | Rabbit IgG |
| Purity | Antigen affinity |
| Buffer | Lyophilized from 1X PBS with 2% Trehalose |
| UniProt | P05019 |
| Applications | Western Blot : 0.5-1ug/ml Immunohistochemistry (FFPE) : 0.5-1ug/ml |
| Limitations | This IGF-1 antibody is available for research use only. |



Western blot testing of IGF-1 antibody and recombinant human protein 2.5ng



IHC-P: IGF-1 antibody testing of human breast cancer tissue

Description

Insulin-like growth factor 1, also known as somatomedin C or mechano growth factor is a protein that in humans is encoded by the IGF1 gene. IGF-1 is a hormone similar in molecular structure to insulin. It plays an important role in childhood growth and continues to have anabolic effects in adults. A synthetic analog of the protein, mecasermin, is used for the treatment of growth failure. IGF-1 consists of 70 amino acids in a single chain with three intramolecular disulfide bridges.

Application Notes

The stated application concentrations are suggested starting amounts. Titration of the IGF-1 antibody may be required due to differences in protocols and secondary/substrate sensitivity.

Immunogen

An amino acid sequence from the middle region of human IGF-1 (GSSSRAPQTGIVDECC) was used as the immunogen for this IGF-1 antibody.

Storage

After reconstitution, the IGF-1 antibody can be stored for up to one month at 4°C. For long-term, aliquot and store at -20°C. Avoid repeated freezing and thawing.