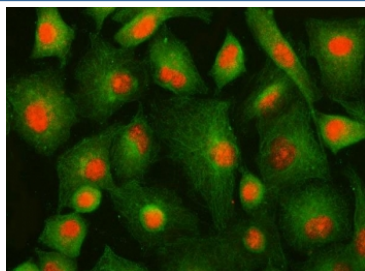


IFFO1 Antibody / HOM-TES-103 (RQ8535)

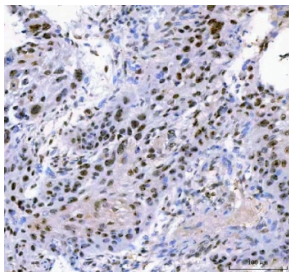
Catalog No.	Formulation	Size
RQ8535	0.5mg/ml if reconstituted with 0.2ml sterile DI water	100 ug

Bulk quote request

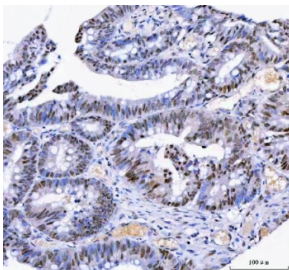
Availability	1-3 days
Species Reactivity	Human, Mouse, Rat
Format	Antigen affinity purified
Clonality	Polyclonal (rabbit origin)
Isotype	Rabbit IgG
Purity	Antigen affinity purified
Buffer	Lyophilized from 1X PBS with 2% Trehalose
UniProt	Q0D2I5
Localization	Nuclear
Applications	Western Blot : 0.5-1ug/ml Immunohistochemistry (FFPE) : 2-5ug/ml Immunofluorescence : 5ug/ml Flow Cytometry : 1-3ug/million cells ELISA : 0.1-0.5ug/ml
Limitations	This IFFO1 antibody is available for research use only.



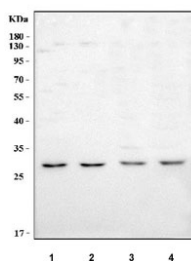
Immunofluorescent staining of FFPE human A549 cells with IFFO1 antibody (red) and Beta Tubulin mAb (green). HIER: steam section in pH6 citrate buffer for 20 min.



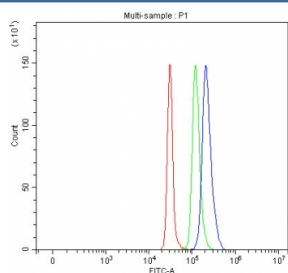
IHC staining of FFPE human esophageal squamous carcinoma tissue with IFFO1 antibody. HIER: boil tissue sections in pH8 EDTA for 20 min and allow to cool before testing.



IHC staining of FFPE human rectum adenocarcinoma tissue with IFFO1 antibody. HIER: boil tissue sections in pH8 EDTA for 20 min and allow to cool before testing.



Western blot testing of 1) human Jurkat, 2) human HepG2, 3) rat brain and 4) mouse brain tissue lysate with IFFO1 antibody. Predicted molecular weight ~23 kDa, 28 kDa and 62 kDa (multiple isoforms).



Flow cytometry testing of fixed and permeabilized human SH-SY5Y cells with IFFO1 antibody at 1ug/million cells (blocked with goat sera); Red=cells alone, Green=isotype control, Blue= IFFO1 antibody.

Description

Intermediate filament family orphan 1 is a protein that in humans is encoded by the IFFO1 gene. This gene is a member of the intermediate filament family. Intermediate filaments are proteins which are primordial components of the cytoskeleton and nuclear envelope. The proteins encoded by the members of this gene family are evolutionarily and structurally related but have limited sequence homology, with the exception of the central rod domain. Multiple alternatively spliced transcript variants encoding different isoforms have been found for this gene.

Application Notes

Optimal dilution of the IFFO1 antibody should be determined by the researcher.

Immunogen

An E.coli-derived human recombinant protein (amino acids M1-R559) was used as the immunogen for the IFFO1 antibody.

Storage

After reconstitution, the IFFO1 antibody can be stored for up to one month at 4oC. For long-term, aliquot and store at -20oC. Avoid repeated freezing and thawing.

