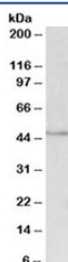


## IDH1 Antibody (R33810)

Catalog No.	Formulation	Size
R33810-100UG	0.5 mg/ml in 1X TBS, pH7.3, with 0.5% BSA (US sourced) and 0.02% sodium azide	100 ug

[Bulk quote request](#)

Availability	1-3 business days
Species Reactivity	Human, Mouse
Predicted Reactivity	Dog, Rabbit, Rat
Format	Antigen affinity purified
Clonality	Polyclonal (goat origin)
Isotype	Goat Ig
Purity	Antigen affinity
Gene ID	3417
Applications	Western Blot : 0.3-1ug/ml ELISA (peptide) LOD : 1:1000
Limitations	This IDH1 antibody is available for research use only.



Western blot testing of HepG2 lysate with IDH1 antibody at 0.3ug/ml. Predicted molecular weight ~46 kDa.

## Description

Additional name(s) for this target protein: Isocitrate dehydrogenase 1

## Application Notes

Optimal dilution of the IDH1 antibody should be determined by the researcher.

## Immunogen

Amino acids EITYTPSDGTQK were used as the immunogen for this IDH1 antibody.

## Storage

Aliquot and store the IDH1 antibody at -20oC.