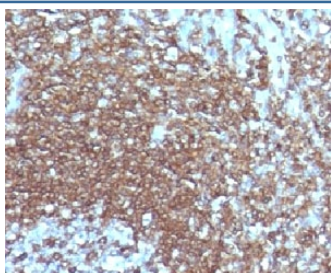


ICAM3 Antibody [clone CDLA50-1] (V7114)

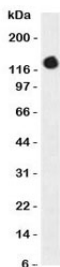
Catalog No.	Formulation	Size
V7114-100UG	0.2 mg/ml in 1X PBS with 0.1 mg/ml BSA (US sourced) and 0.05% sodium azide	100 ug
V7114-20UG	0.2 mg/ml in 1X PBS with 0.1 mg/ml BSA (US sourced) and 0.05% sodium azide	20 ug
V7114SAF-100UG	1 mg/ml in 1X PBS; BSA free, sodium azide free	100 ug
V7114IHC-7ML	Prediluted in 1X PBS with 0.1 mg/ml BSA (US sourced) and 0.05% sodium azide; *For IHC use only*	7 ml

[Bulk quote request](#)

Availability	1-3 business days
Species Reactivity	Human
Format	Purified
Clonality	Monoclonal (mouse origin)
Isotype	Mouse IgG2b, kappa
Clone Name	CDLA50-1
Purity	Protein G affinity chromatography
UniProt	P32942
Localization	Membrane, cytoplasm
Applications	Western Blot : 1-2ug/ml Immunohistochemistry (FFPE) : 1-2ug/ml for 30 min at RT (1) Prediluted IHC Only Format : incubate for 30 min at RT (2)
Limitations	This ICAM3 antibody is available for research use only.



IHC testing of FFPE human tonsil with ICAM3 antibody.



Western blot testing of CD50 / ICAM3 antibody and HL60 cell lysate. Observed molecular weight: 60~120 kDa depending on glycosylation level.

Description

ICAM3/CD50 is a member of the intercellular adhesion molecule (ICAM) family. All ICAM proteins are type I transmembrane glycoproteins, contain 2-9 immunoglobulin-like C2-type domains, and bind to the leukocyte adhesion LFA-1 protein. This protein is constitutively and abundantly expressed by all leucocytes and may be the most important ligand for LFA-1 in the initiation of the immune response. It functions not only as an adhesion molecule, but also as a potent signalling molecule. [RefSeq]

Application Notes

Optimal dilution of the ICAM3 antibody should be determined by the researcher.

1. Staining of formalin-fixed tissues requires boiling tissue sections in 10mM Citrate buffer, pH 6.0, for 10-20 min followed by cooling at RT for 20 min
2. The prediluted format is supplied in a dropper bottle and is optimized for use in IHC. After epitope retrieval step (if required), drip mAb solution onto the tissue section and incubate at RT for 30 min.

Immunogen

Recombinant human protein was used as the immunogen for the ICAM3 antibody.

Storage

Store the ICAM3 antibody at 2-8°C (with azide) or aliquot and store at -20°C or colder (without azide).