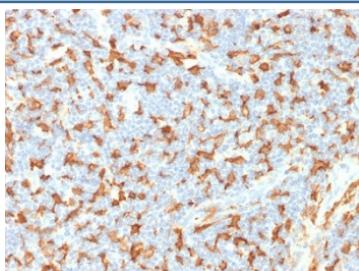


IBA1 Antibody / AIF1 [clone AIF1/1909] (V3830)

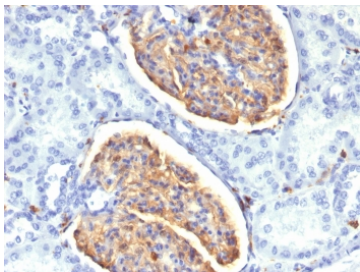
Catalog No.	Formulation	Size
V3830-100UG	0.2 mg/ml in 1X PBS with 0.1 mg/ml BSA (US sourced) and 0.05% sodium azide	100 ug
V3830-20UG	0.2 mg/ml in 1X PBS with 0.1 mg/ml BSA (US sourced) and 0.05% sodium azide	20 ug
V3830SAF-100UG	1 mg/ml in 1X PBS; BSA free, sodium azide free	100 ug

Bulk quote request

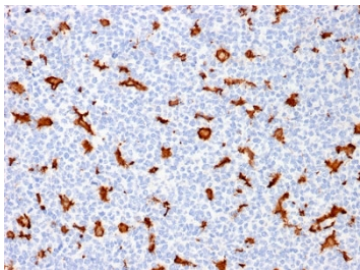
Availability	1-3 business days
Species Reactivity	Human
Format	Purified
Clonality	Monoclonal (mouse origin)
Isotype	Mouse IgG1, kappa
Clone Name	AIF1/1909
Purity	Protein G affinity chromatography
UniProt	P55008
Localization	Cytoplasmic, membranous
Applications	Immunohistochemistry (FFPE) : 1-2ug/ml for 30 min at RT
Limitations	This IBA1 antibody is available for research use only.



IHC testing of FFPE human lymph node with IBA1 antibody (clone AIF1/1909). HIER: boil tissue sections in pH6, 10mM citrate buffer, for 10-20 min followed by cooling at RT for 20 min.



IHC testing of FFPE human kidney tissue with IBA1 antibody (clone AIF1/1909). HIER: boil tissue sections in pH6, 10mM citrate buffer, for 10-20 min followed by cooling at RT for 20 min.

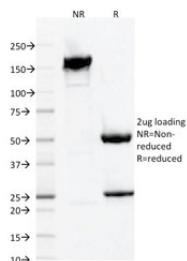


IHC testing of FFPE human tonsil with IBA1 antibody (clone AIF1/1909). HIER: boil tissue sections in pH6, 10mM citrate buffer, for 10-20 min followed by cooling at RT for 20 min.

Human Protein Microarray Specificity Validation



Analysis of HuProt(TM) microarray containing more than 19,000 full-length human proteins using IBA1 antibody (clone AIF1/1909). These results demonstrate the foremost specificity of the AIF1/1909 mAb. Z- and S- score: The Z-score represents the strength of a signal that an antibody (in combination with a fluorescently-tagged anti-IgG secondary Ab) produces when binding to a particular protein on the HuProt(TM) array. Z-scores are described in units of standard deviations (SD's) above the mean value of all signals generated on that array. If the targets on the HuProt(TM) are arranged in descending order of the Z-score, the S-score is the difference (also in units of SD's) between the Z-scores. The S-score therefore represents the relative target specificity of an Ab to its intended target.



SDS-PAGE analysis of purified, BSA-free IBA1 antibody (clone AIF1/1909) as confirmation of integrity and purity.

Description

AIF1 (Allograft inflammatory factor 1), also called IBA1 (Ionized calcium-binding adapter molecule 1) is a cytoplasmic, calcium-binding protein that is thought to play a role in macrophage activation and function. AIF1/IBA1, containing two EF domains, is induced by cytokines and Interferons. In an unstimulated state, it colocalizes with actin, and upon stimulation, translocates to lamellipodia. It is also a marker of human microglia and is expressed by macrophages in injured skeletal muscle. The gene encoding the protein resides in the tumor necrosis factor (TNF) cluster of genes, located in the region represented by the human major histocompatibility complex (MHC).

Application Notes

Titration of the IBA1 antibody may be required for optimal performance.

Immunogen

A portion of amino acids 1-146 from the human protein was used as the immunogen for the IBA1 antibody.

Storage

Store the IBA1 antibody at 2-8oC (with azide) or aliquot and store at -20oC or colder (without azide).