

Human Nuclear Antigen Antibody PE Conjugate [clone 235-1] (V2345PE)

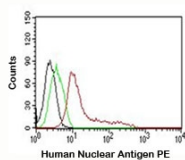
Catalog No.	Formulation	Size
V2345PE-100T	500 ul at 0.1 mg/ml with 0.1 mg/ml BSA (US sourced), 0.05% sodium azide	100 Tests



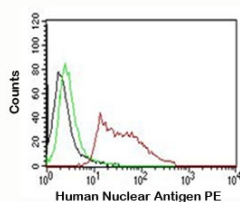
Citations (2)

[Bulk quote request](#)

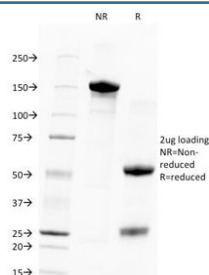
Availability	1-3 business days
Species Reactivity	Human and Primates. Does not react with mouse, rat and chicken. Other species not known.
Format	PE Conjugate
Clonality	Monoclonal (mouse origin)
Isotype	Mouse IgG1, kappa
Clone Name	235-1
Purity	Protein G affinity chromatography
Gene ID	Unknown
Localization	Nuclear
Applications	Flow Cytometry : 5ul/test/million cells or 5ul/test/100ul of whole blood Immunofluorescence : 1:50-1:100 for 30 minutes at RT
Limitations	This Nuclear Antigen antibody is available for research use only.



FACS testing of MCF-7 cells: Black=cells alone; Green=isotype control; Red= Nuclear Antigen antibody



FACS testing of HeLa cells: Black=cells alone; Green=isotype control; Red= Nuclear Antigen antibody



SDS-PAGE Analysis of Purified, BSA-Free, Unlabeled Human Nuclear Antigen Antibody (clone 235-1). Confirmation of Integrity and Purity of the Antibody.

Description

This human nuclear marker/antigen antibody is part of a panel of reagents which recognizes subcellular organelles or compartments of human cells. These markers may be useful in identification of these organelles in cells, tissues, and biochemical preparations. Clone 235-1 antibody specifically detects an antigen associated with the nuclei in human cells. It can be used to stain the nuclei in cell or tissue preparations and can be used as a nuclear marker in subcellular fractions. It produces a speckled pattern in normal and malignant cells and may be used to stain the nuclei of cells in fixed or frozen tissue sections. The human nuclear antigen antibody can also be used with paraformaldehyde fixed frozen tissue or cell preparations.

Application Notes

The concentration stated for each application is a general starting point. Variations in protocols, secondaries and substrates may require the Nuclear Antigen antibody to be titrated up or down for optimal performance.

Immunogen

Nuclei of human myeloid leukemia biopsy cells were used as the immunogen for this Nuclear Antigen antibody.

Storage

Store the human Nuclear Antigen antibody at 2-8°C. Conjugate is light sensitive, store in the dark.

Alternate Names

HNA

References (1)