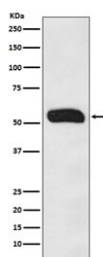


Human IgG Antibody / IGHG1 [clone ABHF-9] (RQ4980)

Catalog No.	Formulation	Size
RQ4980	Antibody in PBS with 0.02% sodium azide, 50% glycerol and 0.4-0.5mg/ml BSA	100 ul

[Bulk quote request](#)

Availability	1-2 weeks
Species Reactivity	Human
Format	Purified
Clonality	Rabbit Monoclonal
Isotype	Rabbit IgG
Clone Name	ABHF-9
Purity	Affinity purified
UniProt	P01857
Applications	Western Blot : 1:500-1:2000
Limitations	This Human IgG antibody is available for research use only.



Western blot testing of human plasma lysate with Human IgG antibody. Predicted molecular weight ~50 kDa.

Description

Immunoglobulins, also known as antibodies, are membrane-bound or secreted glycoproteins produced by B lymphocytes. In the recognition phase of humoral immunity, the membrane-bound immunoglobulins serve as receptors which, upon binding of a specific antigen, trigger the clonal expansion and differentiation of B lymphocytes into immunoglobulins-secreting plasma cells. [UniProt]

Application Notes

Optimal dilution of the Human IgG antibody should be determined by the researcher.

Immunogen

A synthetic peptide specific to Human IgG / IGHG1 was used as the immunogen for the Human IgG antibody.

Storage

Store the Human IgG antibody at -20oC.