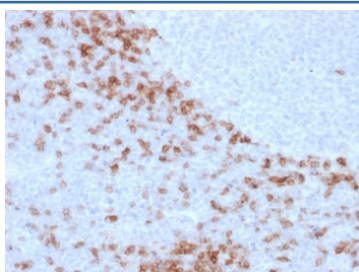


## Human IgD Antibody / Heavy chain [clone IgD26] (V7860)

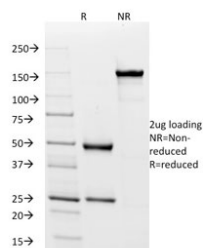
Catalog No.	Formulation	Size
V7860-100UG	0.2 mg/ml in 1X PBS with 0.1 mg/ml BSA (US sourced) and 0.05% sodium azide	100 ug
V7860-20UG	0.2 mg/ml in 1X PBS with 0.1 mg/ml BSA (US sourced) and 0.05% sodium azide	20 ug
V7860SAF-100UG	1 mg/ml in 1X PBS; BSA free, sodium azide free	100 ug

**Bulk quote request**

<b>Availability</b>	1-3 business days
<b>Species Reactivity</b>	Human
<b>Format</b>	Purified
<b>Clonality</b>	Monoclonal (mouse origin)
<b>Isotype</b>	Mouse IgG1, kappa
<b>Clone Name</b>	IgD26
<b>Purity</b>	Protein G affinity chromatography
<b>UniProt</b>	P01880
<b>Applications</b>	Immunohistochemistry (FFPE) : 1-2ug/ml
<b>Limitations</b>	This human IgD antibody is available for research use only.



IHC staining of FFPE human lymph node with human IgD antibody (clone IgD26). HIER: boil tissue sections in pH 9 10mM Tris with 1mM EDTA for 10-20 min and allow to cool before testing.



SDS-PAGE analysis of purified, BSA-free IgD antibody (clone IgD26) as confirmation of integrity and purity.

## Description

Immunoglobulins are four-chain, Y-shaped, monomeric structures comprised of two identical heavy chains and two identical light chains held together through interchain disulfide bonds. The chains form two domains, the Fab (antigen binding) fragment and the Fc (constant) fragment. Immunoglobulin D (IgD) exists as a monomer with light chains. It plays a biological role as a transmembrane receptor molecule, co-expressed with IgM on the surface of mature/naive B cells. In particular, it is found on spleen B cell surfaces. Compared to IgM, IgD exists in much lower numbers and is not expressed on immature B cells. IgD surface expression on B cells is regulated in part by IL-27. In mice, the inhibition of this immunoglobulin isotype does not cause a significant change to the immune system.

## Application Notes

Optimal dilution of the human IgD antibody should be determined by the researcher.

## Immunogen

Full length recombinant human IGHD protein was used as the immunogen for the human IgD antibody.

## Storage

Store the human IgD antibody at 2-8°C (with azide) or aliquot and store at -20°C or colder (without azide).