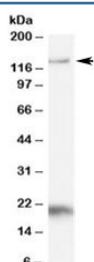


HTATSF1 Antibody (R35249)

Catalog No.	Formulation	Size
R35249-100UG	0.5 mg/ml in 1X TBS, pH7.3, with 0.5% BSA (US sourced) and 0.02% sodium azide	100 ug

[Bulk quote request](#)

Availability	1-3 business days
Species Reactivity	Human
Predicted Reactivity	Dog, Rat
Format	Antigen affinity purified
Clonality	Polyclonal (goat origin)
Isotype	Goat Ig
Purity	Antigen affinity
Gene ID	27336
Applications	Western Blot : 1-3ug/ml ELISA (peptide) LOD : 1:16000
Limitations	This HTATSF1 antibody is available for research use only.



Western blot testing of Daudi cell lysate with HTATSF1 antibody at 1ug/ml. Routinely observed at 130-140kDa. Both bands are blocked by immunizing peptide.

Description

Additional name(s) for this target protein: HIV-1 Tat specific factor 1

Application Notes

Optimal dilution of the HTATSF1 antibody should be determined by the researcher.

Immunogen

Amino acids QELYGDGKDGDGTQTD were used as the immunogen for this HTATSF1 antibody.

Storage

Aliquot and store the HTATSF1 antibody at -20oC.