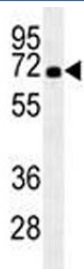


## HSPA1A Antibody [clone 201CT8.2.3] (F40246)

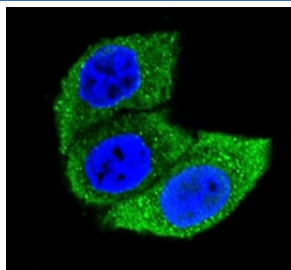
Catalog No.	Formulation	Size
F40246-0.4ML	In 1X PBS, pH 7.4, with 0.09% sodium azide	0.4 ml
F40246-0.08ML	In 1X PBS, pH 7.4, with 0.09% sodium azide	0.08 ml

[Bulk quote request](#)

<b>Availability</b>	1-3 business days
<b>Species Reactivity</b>	Human
<b>Predicted Reactivity</b>	Bovine, Pig
<b>Format</b>	Purified
<b>Clonality</b>	Monoclonal (mouse origin)
<b>Isotype</b>	Mouse IgG1, k
<b>Clone Name</b>	201CT8.2.3
<b>Purity</b>	Purified
<b>UniProt</b>	P0DMV8
<b>Applications</b>	Western Blot : 1:100-1:2000 Immunofluorescence : 1:10-1:50
<b>Limitations</b>	This HSPA1A antibody is available for research use only.



HSPA1A antibody western blot analysis in HL-60 lysate.



Confocal immunofluorescent analysis of HSPA1A antibody with HeLa cells followed by Alexa Fluor 488-conjugated goat anti-mouse IgG (green). DAPI was used as a nuclear counterstain (blue).

## Description

This intronless gene encodes a 70kDa heat shock protein which is a member of the heat shock protein 70 family. In conjunction with other heat shock proteins, this protein stabilizes existing proteins against aggregation and mediates the folding of newly translated proteins in the cytosol and in organelles. It is also involved in the ubiquitin-proteasome pathway through interaction with the AU-rich element RNA-binding protein 1. The gene is located in the major histocompatibility complex class III region, in a cluster with two closely related genes which encode similar proteins.

## Application Notes

Titration of the HSPA1A antibody may be required due to differences in protocols and secondary/substrate sensitivity.

## Immunogen

A portion of amino acids 574-600 from the human protein was used as the immunogen for this HSPA1A antibody.

## Storage

Aliquot the HSPA1A antibody and store frozen at -20oC or colder. Avoid repeated freeze-thaw cycles.