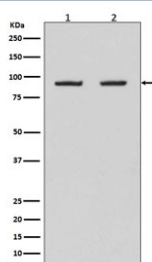


HSP90AB1 Antibody / HSP90 beta [clone CCC-8] (RQ5207)

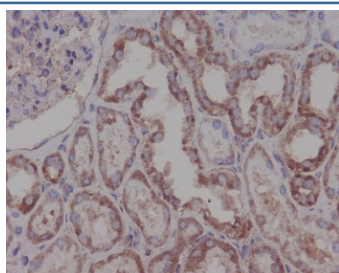
| Catalog No. | Formulation | Size |
|-------------|--|--------|
| RQ5207 | Antibody in PBS with 0.02% sodium azide, 50% glycerol and 0.4-0.5mg/ml BSA | 100 ul |

[Bulk quote request](#)

| | |
|--------------------|---|
| Availability | 1-2 weeks |
| Species Reactivity | Human |
| Format | Purified |
| Clonality | Rabbit Monoclonal |
| Isotype | Rabbit IgG |
| Clone Name | CCC-8 |
| Purity | Affinity purified |
| UniProt | P08238 |
| Applications | Western Blot : 1:500-1:2000 Immunohistochemistry (FFPE) : 1:50-1:200 |
| Limitations | This HSP90AB1 antibody is available for research use only. |



Western blot testing of human 1) HeLa and 2) Raji cell lysate with HSP90AB1 antibody. Predicted molecular weight: 84-90 kDa.



IHC staining of FFPE human kidney tissue with HSP90AB1 antibody. HIER: boil tissue sections in pH6, 10mM citrate buffer, for 10-20 min and allow to cool before testing.

Description

The HSP90AB1 gene encodes a member of the heat shock protein 90 family; these proteins are involved in signal transduction, protein folding and degradation and morphological evolution. This gene encodes the constitutive form of the cytosolic 90 kDa heat-shock protein and is thought to play a role in gastric apoptosis and inflammation. [RefSeq]

Application Notes

Optimal dilution of the HSP90AB1 antibody should be determined by the researcher.

Immunogen

A synthetic peptide specific to human Hsp90 beta / HSP90AB1 was used as the immunogen for the HSP90AB1 antibody.

Storage

Store the HSP90AB1 antibody at -20oC.