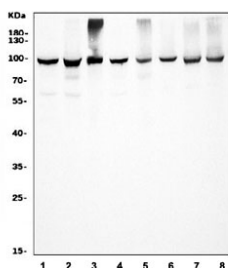


HSP90 alpha Antibody / HSP90AA1 (R31907)

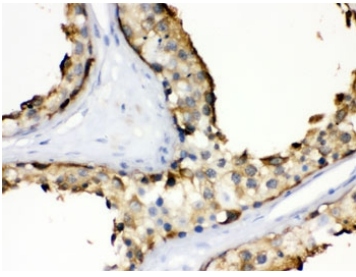
Catalog No.	Formulation	Size
R31907	0.5mg/ml if reconstituted with 0.2ml sterile DI water	100 ug

Bulk quote request

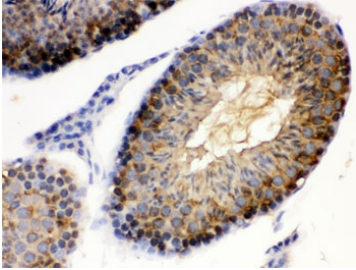
Availability	1-3 business days
Species Reactivity	Human, Mouse, Rat, Monkey
Format	Antigen affinity purified
Clonality	Polyclonal (rabbit origin)
Isotype	Rabbit IgG
Purity	Antigen affinity
Buffer	Lyophilized from 1X PBS with 2.5% BSA and 0.025% sodium azide
UniProt	P07900
Localization	Cytoplasmic
Applications	Western Blot : 0.1-0.5ug/ml Immunohistochemistry (FFPE) : 0.5-1ug/ml Immunofluorescence (FFPE) : 2-4ug/ml Flow Cytometry : 1-3ug/million cells
Limitations	This HSP90 alpha antibody is available for research use only.



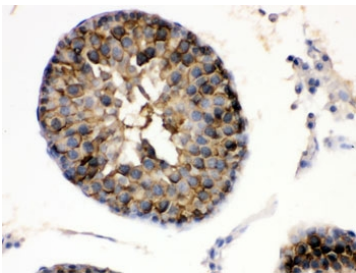
Western blot testing of 1) human HeLa, 2) human HEK293, 3) monkey COS-7, 4) human HepG2, 5) human A549, 6) rat PC-12, 7) rat RH35 and 8) mouse HEPA1-6 cell lysate with HSP90 alpha antibody. Expected molecular weight: 86~90 kDa.



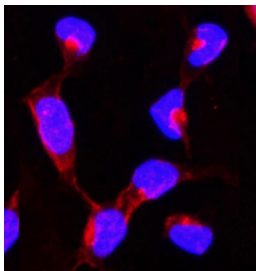
IHC testing of FFPE human testis with HSP90 alpha antibody. HIER: Boil the paraffin sections in pH 6, 10mM citrate buffer for 20 minutes and allow to cool prior to staining.



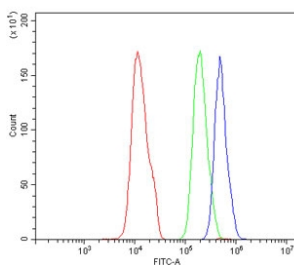
IHC testing of FFPE mouse testis with HSP90 alpha antibody. HIER: Boil the paraffin sections in pH 6, 10mM citrate buffer for 20 minutes and allow to cool prior to staining.



IHC testing of FFPE rat testis with HSP90 alpha antibody. HIER: Boil the paraffin sections in pH 6, 10mM citrate buffer for 20 minutes and allow to cool prior to staining.



Immunofluorescent staining of FFPE human U-2 OS cells with HSP90 alpha antibody (red) and DAPI nuclear stain (blue). HIER: steam section in pH6 citrate buffer for 20 min.



Flow cytometry testing of human SiHa cells with HSP90 alpha antibody at 1ug/million cells (blocked with goat sera); Red=cells alone, Green=isotype control, Blue= HSP90 alpha antibody.

Description

Heat shock protein HSP 90-alpha is a protein that in humans is encoded by the HSP90AA1 gene. The gene, HSP90AA1, encodes the human stress-inducible 90-kDa heat shock protein alpha (Hsp90A). Complemented by the constitutively expressed paralog Hsp90B which shares over 85% amino acid sequence identity, Hsp90A expression is initiated when a cell experiences proteotoxic stress. Once expressed Hsp90A dimers operate as molecular chaperones that bind and fold other proteins into their functional 3-dimensional structures. This molecular chaperoning ability of Hsp90A is driven by a cycle of structural rearrangements fueled by ATP hydrolysis. Current research on Hsp90A focuses in its role as a drug target due to its interaction with a large number of tumor promoting proteins and its role in cellular stress adaptation.

Application Notes

Optimal dilution of the HSP90 alpha antibody should be determined by the researcher.

Immunogen

Amino acids QNRKKLSELLRYTASGDEMVS LKDYCTRMKENQ of human HSP90AA1 were used as the immunogen for the HSP90 alpha antibody.

Storage

After reconstitution, the HSP90 alpha antibody can be stored for up to one month at 4oC. For long-term, aliquot and store at -20oC. Avoid repeated freezing and thawing.