

HSP60 Antibody / HSPD1 [clone LK1] (V2136)

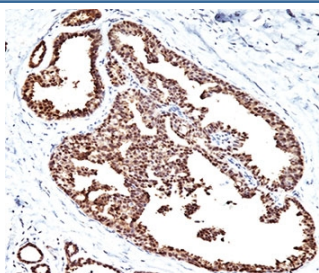
| Catalog No. | Formulation | Size |
|----------------|---|--------|
| V2136-100UG | 0.2 mg/ml in 1X PBS with 0.1 mg/ml BSA (US sourced) and 0.05% sodium azide | 100 ug |
| V2136-20UG | 0.2 mg/ml in 1X PBS with 0.1 mg/ml BSA (US sourced) and 0.05% sodium azide | 20 ug |
| V2136SAF-100UG | 1 mg/ml in 1X PBS; BSA free, sodium azide free | 100 ug |
| V2136IHC-7ML | Prediluted in 1X PBS with 0.1 mg/ml BSA (US sourced) and 0.05% sodium azide; *For IHC use only* | 7 ml |



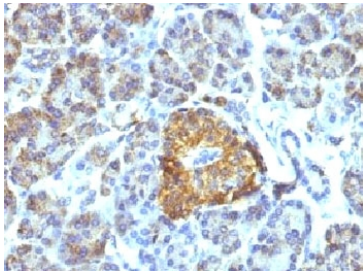
Citations (8)

[Bulk quote request](#)

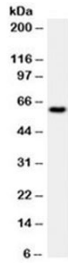
| | |
|---------------------------|---|
| Species Reactivity | Human, Mouse, Rat |
| Format | Purified |
| Clonality | Monoclonal (mouse origin) |
| Isotype | Mouse IgG1, kappa |
| Clone Name | LK1 |
| Purity | Protein G affinity chromatography |
| Gene ID | 3329 |
| Localization | Mitochondria in cytoplasm |
| Applications | Flow Cytometry : 1-2ug/10 ⁶ cells Immunofluorescence : 1-2ug/ml Western Blot : 1-2ug/ml Immunohistochemistry (FFPE) : 1-2ug/ml for 30 min at RT |
| Limitations | This HSP60 antibody is available for research use only. |



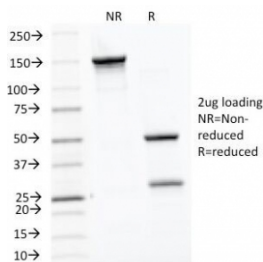
IHC testing of FFPE human breast carcinoma with HSP60 antibody (clone LK1).



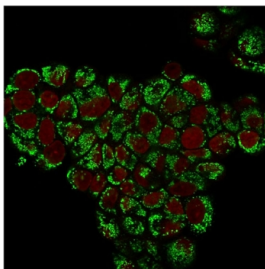
IHC testing of FFPE pancreas tissue with HSP60 antibody (clone LK1).



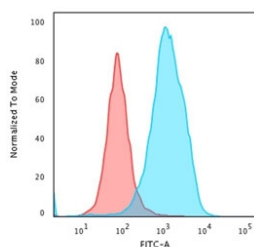
Western blot testing of HeLa cell lysate with HSP60 antibody (clone LK1).



SDS-PAGE Analysis of Purified, BSA-Free HSP60 Antibody (clone LK1). Confirmation of Integrity and Purity of the Antibody.



Immunofluorescent staining of PFA-fixed human MCF7 cells with HSP60 antibody (green, clone LK1) and Reddot nuclear stain (red).



Flow cytometry testing of PFA-fixed human HeLa cells with HSP60 antibody (clone LK1); Red=isotype control, Blue= HSP60 antibody.

Description

This antibody recognizes a 60 kDa protein, identified as the heat shock protein 60. The antibody's epitope is localized between amino acids 383-447 of human HSP60. A wide variety of environmental and pathophysiological stressful conditions trigger the synthesis of a family of proteins known as heat shock proteins (hsp's), more appropriately called as stress response proteins (srp's). HSP60 is a potential antigen in a number of autoimmune diseases. In human arthritis and in experimentally induced arthritis in animals, disease development coincides with the development of immune reactivity directed against not only bacterial HSP60, but also against its mammalian homolog. Clone LK1 antibody, unlike LK2 antibody, recognizes only the mammalian (not bacterial) HSP60 and is useful in distinguishing HSP60 from mammals and bacteria.

Application Notes

The concentration stated for each application is a general starting point. Variations in protocols, secondaries and substrates may require the antibody to be titrated up or down for optimal performance.

1. Staining of formalin-fixed tissues is enhanced by boiling tissue sections in pH 9 10mM Tris with 1mM EDTA for 10-20 min followed by cooling at RT for 20 minutes.
2. The prediluted format is supplied in a dropper bottle and is optimized for use in IHC. After epitope retrieval step (if required), drip mAb solution onto the tissue section and incubate at RT for 30 min.

Immunogen

Recombinant human HSP60 was used as the immunogen for this antibody.

Storage

Store the HSP60 antibody at 2-8oC (with azide) or aliquot and store at -20oC or colder (without azide).

References (1)