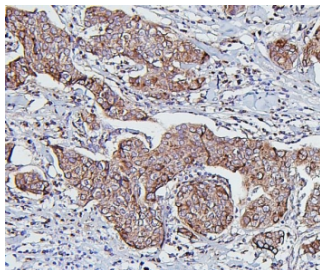


Hsp60 Antibody [clone 6G2] (RQ5508)

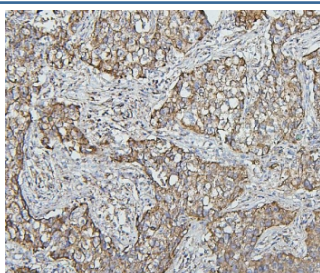
Catalog No.	Formulation	Size
RQ5508	0.5mg/ml if reconstituted with 0.2ml sterile DI water	100 ug

Bulk quote request

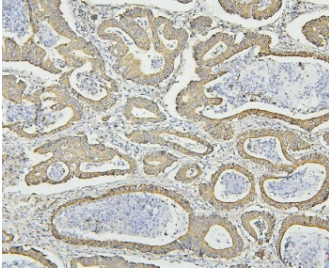
Availability	1-3 business days
Species Reactivity	Human, Mouse, Rat
Format	Antigen affinity purified
Clonality	Monoclonal (mouse origin)
Isotype	Mouse IgG1
Clone Name	6G2
Purity	Affinity purified
Buffer	Lyophilized from 1X PBS with 2% Trehalose and 0.025% sodium azide
UniProt	P10809
Applications	Western Blot : 0.5-1ug/ml Immunohistochemistry (FFPE) : 1-2ug/ml Flow Cytometry : 1-3ug/million cells
Limitations	This Hsp60 antibody is available for research use only.



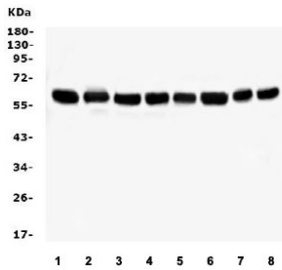
IHC staining of FFPE human breast cancer with Hsp60 antibody. HIER: boil tissue sections in pH6, 10mM citrate buffer, for 20 min and allow to cool before testing.



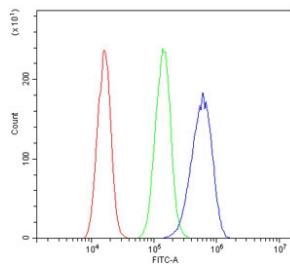
IHC staining of FFPE human lung cancer with Hsp60 antibody. HIER: boil tissue sections in pH6, 10mM citrate buffer, for 20 min and allow to cool before testing.



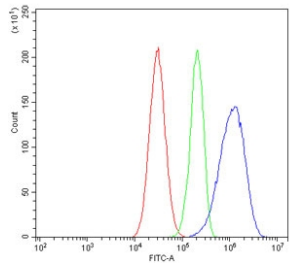
IHC staining of FFPE human intestinal cancer with Hsp60 antibody. HIER: boil tissue sections in pH6, 10mM citrate buffer, for 20 min and allow to cool before testing.



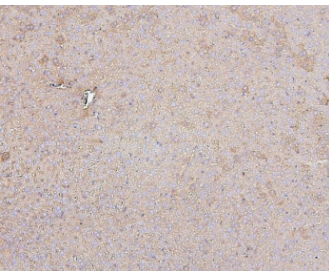
Western blot testing of human 1) Caco-2, 2) A549, 3) ThP-1, 4) SW620, 5) U-937, 6) HepG2, 7) rat RH30 and 8) mouse RAW246.7 lysate with Hsp60 antibody. Predicted molecular weight ~60 kDa.



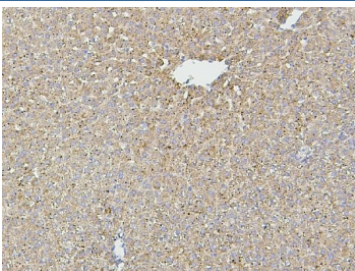
Flow cytometry testing of human A431 cells with Hsp60 antibody at 1ug/million cells (blocked with goat sera); Red=cells alone, Green=isotype control, Blue= Hsp60 antibody.



Flow cytometry testing of human HepG2 cells with Hsp60 antibody at 1ug/million cells (blocked with goat sera); Red=cells alone, Green=isotype control, Blue= Hsp60 antibody.



IHC staining of FFPE mouse liver with Hsp60 antibody. HIER: boil tissue sections in pH6, 10mM citrate buffer, for 20 min and allow to cool before testing.



IHC staining of FFPE rat liver with Hsp60 antibody. HIER: boil tissue sections in pH6, 10mM citrate buffer, for 20 min and allow to cool before testing.

Description

HSP60 is a member of the chaperonin class of protein factors, which include the Escherichia coli groEL protein and the Rubisco subunit-binding protein of chloroplasts. It acts as a costimulator of human regulatory CD4-positive/CD25 -positive T cells, which inhibit lymphoproliferation and IFNG and TNF secretion by CD4-positive and CD8-positive T cells. HSP60 enhances Treg activity via TLR2, leading to activation of an intracellular signaling cascade that included p38, as well as inhibition of ERK phosphorylation. Suppression of target T cells is mediated by both cell-to-cell contact and by secretion of TGFB and IL10, and it leads to downregulation of ERK, NFkB, and TBET expression. The self-molecule HSP60 can downregulate adaptive immune responses by upregulating Tregs through TLR2 signaling.

Application Notes

Optimal dilution of the Hsp60 antibody should be determined by the researcher.

Immunogen

A human recombinant protein (amino acids A260-Q496) was used as the immunogen for the Hsp60 antibody.

Storage

After reconstitution, the Hsp60 antibody can be stored for up to one month at 4oC. For long-term, aliquot and store at -20oC. Avoid repeated freezing and thawing.