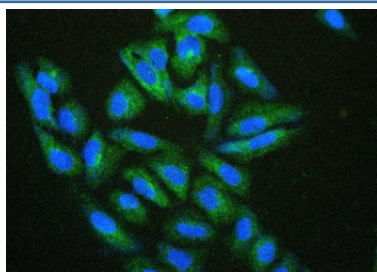


## Hsp27 Antibody [clone 3H3] (RQ5504)

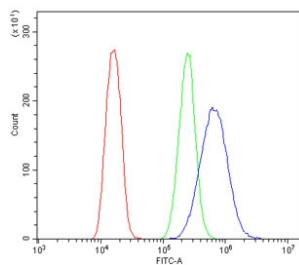
Catalog No.	Formulation	Size
RQ5504	0.5mg/ml if reconstituted with 0.2ml sterile DI water	100 ug

**Bulk quote request**

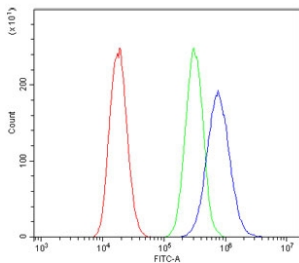
<b>Availability</b>	1-3 business days
<b>Species Reactivity</b>	Human
<b>Format</b>	Antigen affinity purified
<b>Clonality</b>	Monoclonal (mouse origin)
<b>Isotype</b>	Mouse IgG1
<b>Clone Name</b>	3H3
<b>Purity</b>	Affinity purified
<b>Buffer</b>	Lyophilized from 1X PBS with 2% Trehalose and 0.025% sodium azide
<b>UniProt</b>	P04792
<b>Applications</b>	Western Blot : 0.5-1ug/ml Immunohistochemistry (FFPE) : 1-2ug/ml Immunocytochemistry/Immunofluorescence : 2-4ug/ml Flow Cytometry : 1-3ug/million cells
<b>Limitations</b>	This Hsp27 antibody is available for research use only.



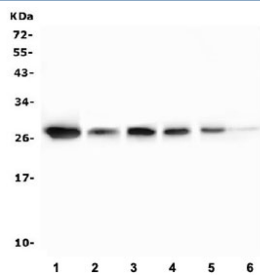
Immunofluorescent staining of FFPE human U-2 OS cells with Hsp27 antibody (green) and DAPI (blue). HIER: boil tissue sections in pH6, 10mM citrate buffer, for 20 min and allow to cool before testing.



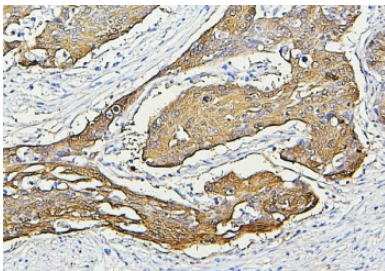
Flow cytometry testing of human U-2 OS cells with Hsp27 antibody at 1ug/million cells (blocked with goat sera); Red=cells alone, Green=isotype control, Blue= Hsp27 antibody.



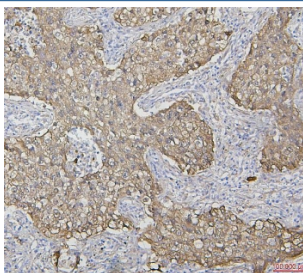
Flow cytometry testing of human A549 cells with Hsp27 antibody at 1ug/million cells (blocked with goat sera); Red=cells alone, Green=isotype control, Blue= Hsp27 antibody.



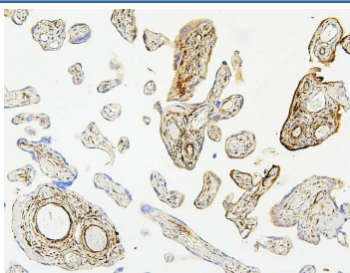
Western blot testing of human 1) T-47D, 2) A431, 3) A549, 4) HeLa, 5) K562 and 6) HepG2 cell lysate with Hsp27 antibody. Expected molecular weight: 23-27 kDa.



IHC staining of FFPE human esophagus squama cancer with Hsp27 antibody. HIER: boil tissue sections in pH6, 10mM citrate buffer, for 20 min and allow to cool before testing.



IHC staining of FFPE human lung cancer with Hsp27 antibody. HIER: boil tissue sections in pH6, 10mM citrate buffer, for 20 min and allow to cool before testing.



IHC staining of FFPE human placenta with Hsp27 antibody. HIER: boil tissue sections in pH6, 10mM citrate buffer, for 20 min and allow to cool before testing.

## Description

HSPB1 (Heat shock 27kDa protein 1), also known as HSP27, is a protein that in humans is encoded by the HSPB1 gene. HSP27 gene is mapped to 7q11.23. The protein encoded by this gene is induced by environmental stress and developmental changes. The encoded protein is involved in stress resistance and actin organization and translocates from the cytoplasm to the nucleus upon stress induction. Defects in this gene are a cause of Charcot-Marie-Tooth disease type 2F (CMT2F) and distal hereditary motor neuropathy (dHMN).

## Application Notes

Optimal dilution of the Hsp27 antibody should be determined by the researcher.

## Immunogen

A human recombinant protein (amino acids M1-K205) was used as the immunogen for the Hsp27 antibody.

## Storage

After reconstitution, the Hsp27 antibody can be stored for up to one month at 4°C. For long-term, aliquot and store at -20°C. Avoid repeated freezing and thawing.