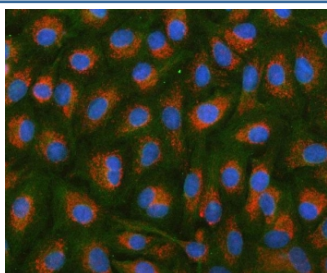


HSDL2 Antibody / Hydroxysteroid dehydrogenase-like protein 2 (RQ8825)

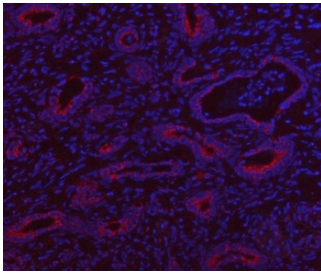
Catalog No.	Formulation	Size
RQ8825	0.5mg/ml if reconstituted with 0.2ml sterile DI water	100 ug

Bulk quote request

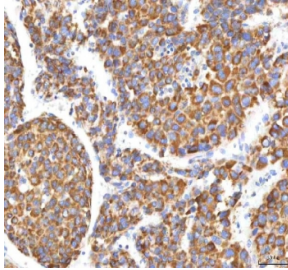
Availability	1-3 days
Species Reactivity	Human, Mouse, Rat
Format	Antigen affinity purified
Clonality	Polyclonal (rabbit origin)
Isotype	Rabbit IgG
Purity	Antigen affinity chromatography
Buffer	Lyophilized from 1X PBS with 2% Trehalose
UniProt	Q6YN16
Localization	Cytoplasm
Applications	Western Blot : 1-2ug/ml Immunohistochemistry (FFPE) : 2-5ug/ml Immunofluorescence : 5ug/ml Flow Cytometry : 1-3ug/million cells ELISA : 0.1-0.5ug/ml
Limitations	This HSDL2 antibody is available for research use only.



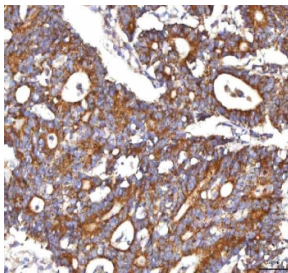
Immunofluorescent staining of FFPE human HSDL2 cells with PAPSS2 antibody (red), Phalloidin-iFluor 488 (green) and DAPI nuclear stain (blue). HIER: steam section in pH6 citrate buffer for 20 min.



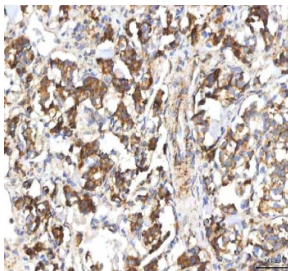
Immunofluorescent staining of FFPE human intestinal cancer tissue with HSDL2 antibody (red) and DAPI nuclear stain (blue). HIER: steam section in pH8 EDTA buffer for 20 min.



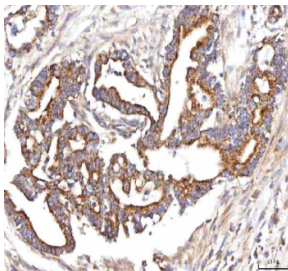
IHC staining of FFPE human liver cancer tissue with HSDL2 antibody. HIER: boil tissue sections in pH8 EDTA for 20 min and allow to cool before testing.



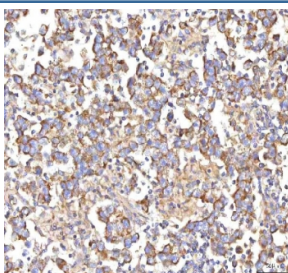
IHC staining of FFPE human colon adenocarcinoma tissue with HSDL2 antibody. HIER: boil tissue sections in pH8 EDTA for 20 min and allow to cool before testing.



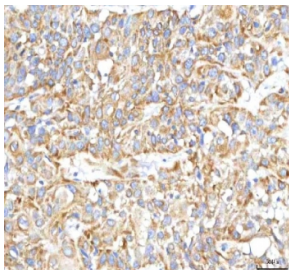
IHC staining of FFPE human lung cancer tissue with HSDL2 antibody. HIER: boil tissue sections in pH8 EDTA for 20 min and allow to cool before testing.



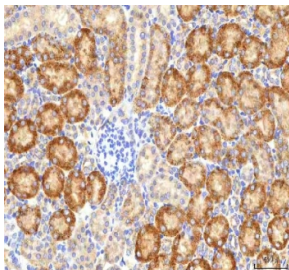
IHC staining of FFPE human pancreas ductal adenocarcinoma tissue with HSDL2 antibody. HIER: boil tissue sections in pH8 EDTA for 20 min and allow to cool before testing.



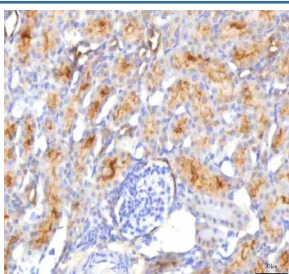
IHC staining of FFPE human testicular seminoma tissue with HSDL2 antibody. HIER: boil tissue sections in pH8 EDTA for 20 min and allow to cool before testing.



IHC staining of FFPE human urothelial carcinoma tissue with HSDL2 antibody. HIER: boil tissue sections in pH8 EDTA for 20 min and allow to cool before testing.



IHC staining of FFPE mouse kidney tissue with HSDL2 antibody. HIER: boil tissue sections in pH8 EDTA for 20 min and allow to cool before testing.



IHC staining of FFPE rat kidney tissue with HSDL2 antibody. HIER: boil tissue sections in pH8 EDTA for 20 min and allow to cool before testing.

Description

Hydroxysteroid dehydrogenase-like protein 2 controls bile acid (BA) and lipid metabolism in response to nutritional cues. It appears to have no steroid dehydrogenase activity. [UniProt]

Application Notes

Optimal dilution of the HSDL2 antibody should be determined by the researcher.

Immunogen

An E.coli-derived human recombinant protein (amino acids K24-K284) was used as the immunogen for the HSDL2 antibody.

Storage

After reconstitution, the HSDL2 Antibody can be stored for up to one month at 4oC. For long-term, aliquot and store at -20oC. Avoid repeated freezing and thawing.