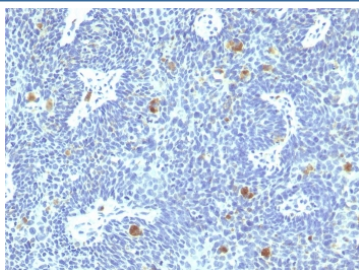


HPV-16 E6 Antibody [clone HPV16/1295] (V8315)

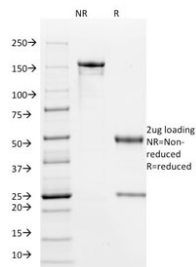
Catalog No.	Formulation	Size
V8315-100UG	0.2 mg/ml in 1X PBS with 0.1 mg/ml BSA (US sourced) and 0.05% sodium azide	100 ug
V8315-20UG	0.2 mg/ml in 1X PBS with 0.1 mg/ml BSA (US sourced) and 0.05% sodium azide	20 ug
V8315SAF-100UG	1 mg/ml in 1X PBS; BSA free, sodium azide free	100 ug

Bulk quote request

Availability	1-3 business days
Species Reactivity	Type 16 of Human Papilloma Virus (HPV-16)
Format	Purified
Clonality	Monoclonal (mouse origin)
Isotype	Mouse IgG1, kappa
Clone Name	HPV16/1295
Purity	Protein G affinity chromatography
Localization	Nuclear
Applications	Immunohistochemistry (FFPE) : 1-2ug/ml
Limitations	This HPV-16 E6 antibody is available for research use only.



IHC staining of FFPE human cervix with HPV-16 E6 antibody. HIER: boil tissue sections in pH 9 10mM Tris with 1mM EDTA for 20 min and allow to cool before testing.



SDS-PAGE analysis of purified, BSA-free HPV-16 E6 antibody (clone HPV16/1295) as confirmation of integrity and purity.

Description

Reacts with E6 protein of human papilloma virus type 16 (HPV-16). Infection with specific types of HPV has been associated with an increased risk of developing cervical neoplasia. HPV types 6 and 11 have been associated with relatively benign diseases such as genital warts but types 16 and 18 are strongly associated with cervical, vaginal, and vulvar malignancies. The antibody reacts very strongly with formalin-fixed, paraffin-embedded tissues containing HPV-16.

Application Notes

Optimal dilution of the HPV-16 E6 antibody should be determined by the researcher.

Immunogen

Amino acids MHQKRTAMFQDPPQERPRKLPQLC were used as the immunogen for this HPV-16 antibody.

Storage

Store the HPV-16 E6 antibody at 2-8°C (with azide) or aliquot and store at -20°C or colder (without azide).