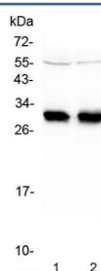


HLA-DRB1 Antibody (RQ4649)

Catalog No.	Formulation	Size
RQ4649	0.5mg/ml if reconstituted with 0.2ml sterile DI water	100 ug

Bulk quote request

Availability	1-3 business days
Species Reactivity	Human
Format	Antigen affinity purified
Clonality	Polyclonal (rabbit origin)
Isotype	Rabbit IgG
Purity	Antigen affinity purified
Buffer	Lyophilized from 1X PBS with 2% Trehalose and 0.025% sodium azide
UniProt	P13761
Applications	Western Blot : 0.5-1ug/ml
Limitations	This HLA-DRB1 antibody is available for research use only.



Western blot testing of two lots of human Raji lysate with HLA-DRB1 antibody at 0.5ug/ml. Predicted molecular weight ~30 kDa.

Description

HLA class II histocompatibility antigen, DRB1 beta chain is a protein that in humans is encoded by the HLA-DRB1 gene. This gene is mapped to 6p21.32. DRB1 encodes the most prevalent beta subunit of HLA-DR. Several alleles of DRB1 (shared epitope alleles) are associated with an increased incidence of rheumatoid arthritis. HLA-DRB1 belongs to the HLA class II beta chain paralogs. The class II molecule is a heterodimer consisting of an alpha (DRA) and a beta chain (DRB), both anchored in the membrane. It plays a central role in the immune system by presenting peptides derived from extracellular proteins. Class II molecules are expressed in antigen presenting cells (APC: B lymphocytes, dendritic cells, macrophages). The beta chain is approximately 26-28 kDa. It is encoded by 6 exons. It plays a central role in the immune system by presenting peptides derived from extracellular proteins to T helper cells.

Application Notes

Optimal dilution of the HLA-DRB1 antibody should be determined by the researcher.

Immunogen

Amino acids TERVQFLERLFYNQEEFVRFDSDVGEYRAVTELGR were used as the immunogen for the HLA-DRB1 antibody.

Storage

After reconstitution, the HLA-DRB1 antibody can be stored for up to one month at 4oC. For long-term, aliquot and store at -20oC. Avoid repeated freezing and thawing.