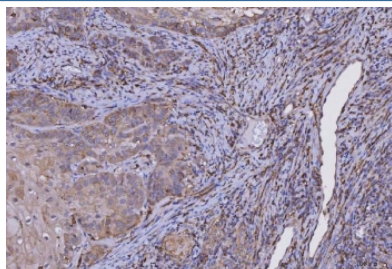


HLA-DRA Antibody [clone 5B13F7] (RQ7131)

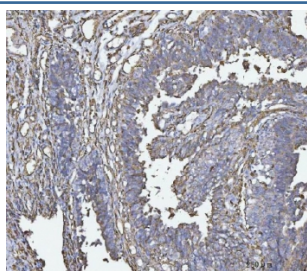
Catalog No.	Formulation	Size
RQ7131	0.5mg/ml if reconstituted with 0.2ml sterile DI water	100 ug

Bulk quote request

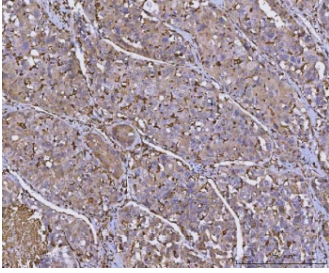
Availability	1-3 business days
Species Reactivity	Human
Format	Antigen affinity purified
Clonality	Monoclonal (mouse origin)
Isotype	Mouse IgG2b
Clone Name	5B13F7
Purity	Antigen affinity purified
Buffer	Lyophilized from 1X PBS with 2% Trehalose
UniProt	P01903
Applications	Western Blot : 0.5-1ug/ml Immunohistochemistry (FFPE) : 2-5ug/ml Flow Cytometry : 1-3ug/million cells
Limitations	This HLA-DRA antibody is available for research use only.



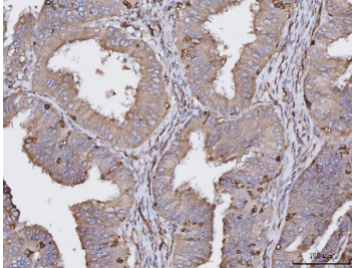
IHC staining of FFPE human laryngeal squamous cell carcinoma tissue with HLA-DRA antibody. HIER: boil tissue sections in pH8 EDTA for 20 min and allow to cool before testing.



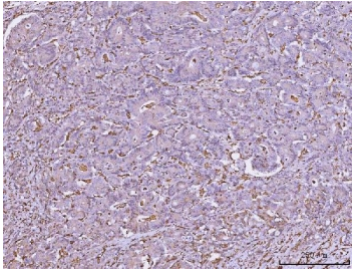
IHC staining of FFPE human bladder epithelial carcinoma tissue with HLA-DRA antibody. HIER: boil tissue sections in pH8 EDTA for 20 min and allow to cool before testing.



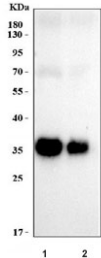
IHC staining of FFPE human hepatocellular carcinoma tissue with HLA-DRA antibody. HIER: boil tissue sections in pH8 EDTA for 20 min and allow to cool before testing.



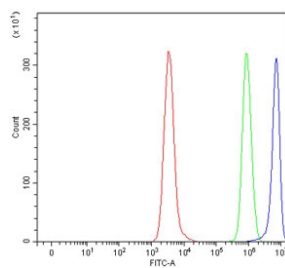
IHC staining of FFPE human endometrial cancer tissue with HLA-DRA antibody. HIER: boil tissue sections in pH8 EDTA for 20 min and allow to cool before testing.



IHC staining of FFPE human colonic adenocarcinoma tissue with HLA-DRA antibody. HIER: boil tissue sections in pH8 EDTA for 20 min and allow to cool before testing.



Western blot testing of human 1) Raji and 2) Daudi cell lysate with HLA-DRA antibody. Expected molecular weight ~35 kDa.



Flow cytometry testing of human Daudi cells with HLA-DRA antibody at 1ug/million cells (blocked with goat sera); Red=cells alone, Green=isotype control, Blue= HLA-DRA antibody.

Description

HLA class II histocompatibility antigen, DR alpha chain is a protein that in humans is encoded by the HLA-DRA gene. It is mapped to 6p21.32. HLA-DRA is one of the HLA class II alpha chain paralogues. This class II molecule is a heterodimer consisting of an alpha and a beta chain, both anchored in the membrane. It plays a central role in the immune system by presenting peptides derived from extracellular proteins. Class II molecules are expressed in antigen presenting cells (APC: B lymphocytes, dendritic cells, macrophages). The alpha chain is approximately 33-35 kDa and its gene contains 5 exons. Exon 1 encodes the leader peptide, exons 2 and 3 encode the two extracellular domains, and exon 4 encodes the transmembrane domain and the cytoplasmic tail. DRA does not have polymorphisms in the peptide binding part and acts

as the sole alpha chain for DRB1, DRB3, DRB4 and DRB5.

Application Notes

Optimal dilution of the HLA-DRA antibody should be determined by the researcher.

Immunogen

Recombinant human protein (amino acids I26-L254) was used as the immunogen for the HLA-DRA antibody.

Storage

After reconstitution, the HLA-DRA antibody can be stored for up to one month at 4oC. For long-term, aliquot and store at -20oC. Avoid repeated freezing and thawing.