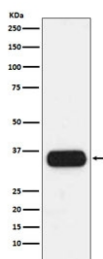


## HLA-DQA1 Antibody [clone ACEC-8] (RQ4988)

Catalog No.	Formulation	Size
RQ4988	Antibody in PBS with 0.02% sodium azide, 50% glycerol and 0.4-0.5mg/ml BSA	100 ul

[Bulk quote request](#)

Availability	1-2 weeks
Species Reactivity	Human
Format	Purified
Clonality	Rabbit Monoclonal
Isotype	Rabbit IgG
Clone Name	ACEC-8
Purity	Affinity purified
UniProt	P01909
Applications	Western Blot : 1:1000-1:5000
Limitations	This HLA-DQA1 antibody is available for research use only.



Western blot testing of human spleen lysate with HLA-DQA1 antibody. Expected molecular weight ~34 kDa.

### Description

HLA-DQA1 belongs to the HLA class II alpha chain paralogues. The class II molecule is a heterodimer consisting of an alpha (DQA) and a beta chain (DQB), both anchored in the membrane. It plays a central role in the immune system by presenting peptides derived from extracellular proteins. [UniProt]

### Application Notes

Optimal dilution of the HLA-DQA1 antibody should be determined by the researcher.

### Immunogen

A synthetic peptide specific to human HLA-DQA1 was used as the immunogen for the HLA-DQA1 antibody.

## **Storage**

Store the HLA-DQA1 antibody at -20oC.