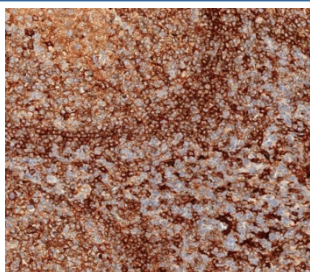


HLA-DPB1 Antibody (F54283)

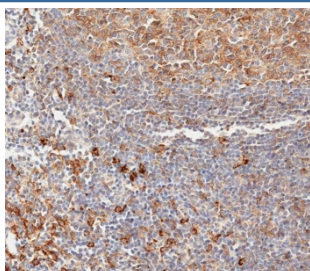
Catalog No.	Formulation	Size
F54283-0.4ML	In 1X PBS, pH 7.4, with 0.09% sodium azide	0.4 ml
F54283-0.08ML	In 1X PBS, pH 7.4, with 0.09% sodium azide	0.08 ml

Bulk quote request

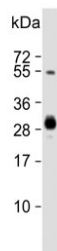
Availability	1-3 business days
Species Reactivity	Human
Format	Purified
Clonality	Polyclonal (rabbit origin)
Isotype	Rabbit Ig
Purity	Antigen affinity purified
UniProt	P04440
Localization	Cell surface
Applications	Western Blot : 1:500-1:2000 Immunohistochemistry (FFPE) : 1:25 Flow Cytometry : 1:25 (1x10e6 cells)
Limitations	This HLA-DPB1 antibody is available for research use only.



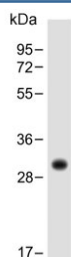
IHC testing of FFPE human tonsil tissue with HLA-DPB1 antibody.



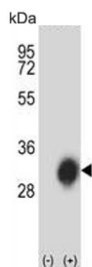
IHC testing of FFPE human lymph node tissue with HLA-DPB1 antibody.



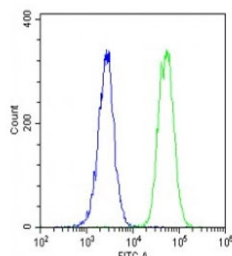
Western blot testing of human Raji cell lysate with HLA-DPB1 antibody. Predicted molecular weight: 29 kDa.



Western blot testing of human lung lysate with HLA-DPB1 antibody. Predicted molecular weight: 29 kDa.



Western blot testing of 1) non-transfected and 2) transfected 293 cell lysate with HLA-DPB1 antibody. Predicted molecular weight ~29 kDa.



Flow cytometry testing of fixed and permeabilized human U-2 OS cells with HLA-DPB1 antibody; Blue=isotype control, Green= HLA-DPB1 antibody.

Description

HLA-DPB belongs to the HLA class II beta chain paralogues. This class II molecule is a heterodimer consisting of an alpha (DPA) and a beta chain (DPB), both anchored in the membrane. It plays a central role in the immune system by presenting peptides derived from extracellular proteins. Class II molecules are expressed in antigen presenting cells (APC: B lymphocytes, dendritic cells, macrophages). The beta chain is approximately 26-28 kDa and its gene contains 6 exons. Exon one encodes the leader peptide, exons 2 and 3 encode the two extracellular domains, exon 4 encodes the transmembrane domain and exon 5 encodes the cytoplasmic tail. Within the DP molecule both the alpha chain and the beta chain contain the polymorphisms specifying the peptide binding specificities, resulting in up to 4 different molecules.

Application Notes

The stated application concentrations are suggested starting points. Titration of the HLA-DPB1 antibody may be required due to differences in protocols and secondary/substrate sensitivity.

Immunogen

A portion of amino acids 77-105 from the human protein were used as the immunogen for the HLA-DPB1 antibody.

Storage

Aliquot the HLA-DPB1 antibody and store frozen at -20oC or colder. Avoid repeated freeze-thaw cycles.