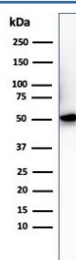


Histidine Antibody / His Tag [clone 6HIS/3550] (V8566)

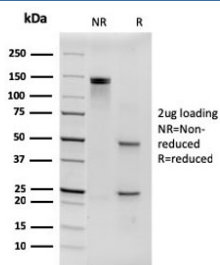
Catalog No.	Formulation	Size
V8566-100UG	0.2 mg/ml in 1X PBS with 0.1 mg/ml BSA (US sourced) and 0.05% sodium azide	100 ug
V8566-20UG	0.2 mg/ml in 1X PBS with 0.1 mg/ml BSA (US sourced) and 0.05% sodium azide	20 ug
V8566SAF-100UG	1 mg/ml in 1X PBS; BSA free, sodium azide free	100 ug

Bulk quote request

Availability	1-3 business days
Species Reactivity	All species
Format	Purified
Clonality	Monoclonal (mouse origin)
Isotype	Mouse IgG1, kappa
Clone Name	6HIS/3550
Purity	Protein G affinity chromatography
UniProt	Not Applicable
Applications	Western Blot : 1-2ug/ml Flow Cytometry : 0.5-1ug/million cells Immunofluorescence : 0.5-1ug/ml Immunoprecipitation : 2-4ug/500ug protein
Limitations	This Histidine antibody is available for research use only.



Western blot testing of His-tagged protein with Histidine antibody.



SDS-PAGE analysis of purified, BSA-free Histidine antibody (clone 6HIS/3550) as confirmation of integrity and purity.

Description

It recognizes both the free and protein-conjugated (either soluble or cell bound) form of hexa-histidine. This MAb is highly specific to hexa-histidine and shows no cross-reaction with other structurally related compounds. It has a very high affinity for hexa-histidine and is excellent for use in various techniques. His-Tag Antibody detects recombinant proteins containing the 6xHis epitope tag. The antibody recognizes the 6xHis-tag fused to either the amino or carboxy terminus of targeted proteins in transfected cells. Epitope tags are useful for the labeling and detection of proteins using immunoblotting, immunoprecipitation, and immunostaining techniques. Because of their small size, they are unlikely to affect the tagged proteins biochemical properties. A variety of plasmids contain DNA that encodes an amino-terminal tag consisting of six histidine (6xHis) residues followed by an extended multiple cloning site. The 6xHis tag on the expressed recombinant proteins allows for efficient coupling to Ni²⁺ affinity resins and purification by single step chromatography. As is the case with other protein tag systems, this polyhistidine tag can often be cleaved at sites recognized by proteases such as thrombin and enterokinases to isolate the protein of interest.

Application Notes

Optimal dilution of the Histidine antibody should be determined by the researcher.

Immunogen

Hexa-histidine tagged human recombinant protein was used as the immunogen for the Histidine antibody.

Storage

Store the Histidine antibody at 2-8°C (with azide) or aliquot and store at -20°C or colder (without azide).