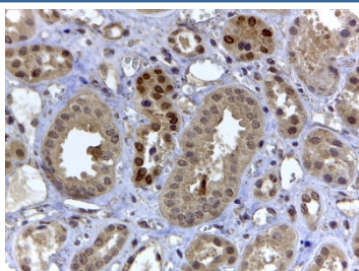


HIF3A Antibody (R35216)

Catalog No.	Formulation	Size
R35216-100UG	0.5 mg/ml in 1X TBS, pH7.3, with 0.5% BSA (US sourced) and 0.02% sodium azide	100 ug

[Bulk quote request](#)

Availability	1-3 business days
Species Reactivity	Human
Predicted Reactivity	Mouse, Rat
Format	Antigen affinity purified
Clonality	Polyclonal (goat origin)
Isotype	Goat Ig
Purity	Antigen affinity
Gene ID	64344
Applications	Immunohistochemistry (FFPE) : 4-6ug/ml ELISA (peptide) LOD : 1:128000
Limitations	This HIF3A antibody is available for research use only.



IHC testing of FFPE human kidney with HIF3A antibody at 4ug/ml. HIER: steamed with pH6 citrate buffer, HRP-staining. Nuclear staining in some of the distal convoluted tubules is seen.

Description

Additional name(s) for this target protein: Hypoxia inducible factor 3 alpha

Application Notes

Optimal dilution of the HIF3A antibody should be determined by the researcher.

1. This HIF3A antibody is specific for isoforms a and c.

Immunogen

Amino acids QDHRSTTELRLKEKS were used as the immunogen for this HIF3A antibody.

Storage

Aliquot and store the HIF3A antibody at -20oC.