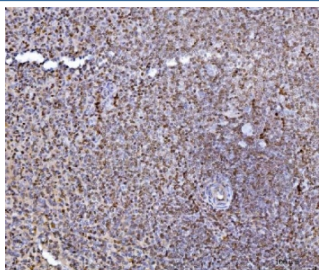


## HES5 Antibody (RQ6640)

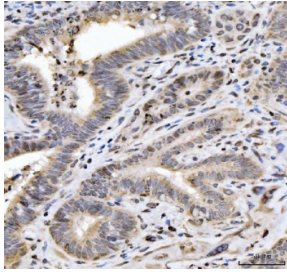
Catalog No.	Formulation	Size
RQ6640	0.5mg/ml if reconstituted with 0.2ml sterile DI water	100 ug

**Bulk quote request**

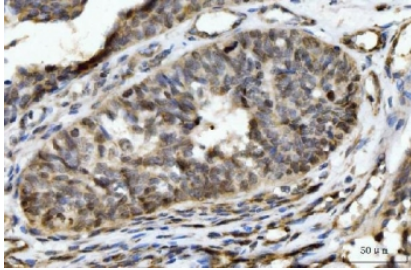
<b>Availability</b>	1-3 business days
<b>Species Reactivity</b>	Human
<b>Format</b>	Antigen affinity purified
<b>Clonality</b>	Polyclonal (rabbit origin)
<b>Isotype</b>	Rabbit IgG
<b>Purity</b>	Antigen affinity purified
<b>Buffer</b>	Lyophilized from 1X PBS with 2% Trehalose
<b>UniProt</b>	Q5TA89
<b>Localization</b>	Nuclear
<b>Applications</b>	Western Blot : 1-2ug/ml Immunohistochemistry (FFPE) : 2-5ug/ml Flow Cytometry : 1-3ug/million cells Direct ELISA : 0.1-0.5ug/ml
<b>Limitations</b>	This HES5 antibody is available for research use only.



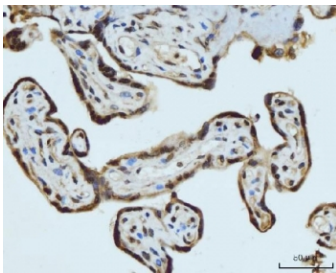
IHC staining of FFPE human spleen tissue with HES5 antibody. HIER: boil tissue sections in pH8 EDTA for 20 min and allow to cool before testing.



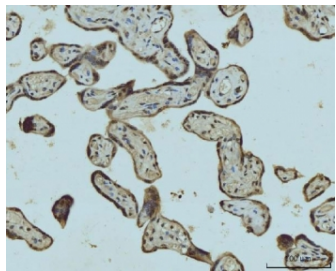
IHC staining of FFPE human gall bladder adenosquamous carcinoma tissue with HES5 antibody. HIER: boil tissue sections in pH8 EDTA for 20 min and allow to cool before testing.



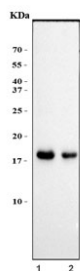
IHC staining of FFPE human bladder epithelial carcinoma tissue with HES5 antibody. HIER: boil tissue sections in pH8 EDTA for 20 min and allow to cool before testing.



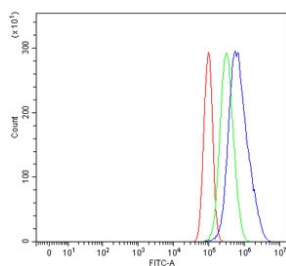
IHC staining of FFPE human placental tissue with HES5 antibody. HIER: boil tissue sections in pH8 EDTA for 20 min and allow to cool before testing.



IHC staining of FFPE human placental tissue with HES5 antibody. HIER: boil tissue sections in pH8 EDTA for 20 min and allow to cool before testing.



Western blot testing of human 1) HaCaT and 2) HepG2 cell lysate with HES5 antibody. Predicted molecular weight ~18 kDa.



Flow cytometry testing of human PC-3 cells with HES5 antibody at 1ug/million cells (blocked with goat sera); Red=cells alone, Green=isotype control, Blue= HES5 antibody.

## Description

Transcription factor HES-5 is a protein that in humans is encoded by the HES5 gene. This gene encodes a member of a family of basic helix-loop-helix transcriptional repressors. The protein product of this gene, which is activated downstream of the Notch pathway, regulates cell differentiation in multiple tissues. Disruptions in the normal expression of this gene have been associated with developmental diseases and cancer.

## Application Notes

Optimal dilution of the HES5 antibody should be determined by the researcher.

## Immunogen

Recombinant human protein (amino acids M1-R121) was used as the immunogen for the HES5 antibody.

## Storage

After reconstitution, the HES5 antibody can be stored for up to one month at 4oC. For long-term, aliquot and store at -20oC. Avoid repeated freezing and thawing.