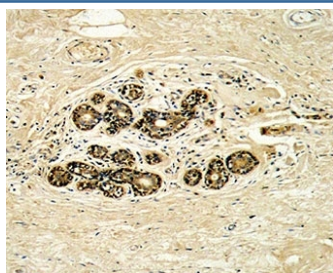


HER3 Antibody (F50603)

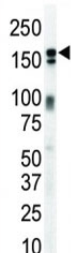
Catalog No.	Formulation	Size
F50603-0.4ML	In 1X PBS, pH 7.4, with 0.09% sodium azide	0.4 ml
F50603-0.08ML	In 1X PBS, pH 7.4, with 0.09% sodium azide	0.08 ml

[Bulk quote request](#)

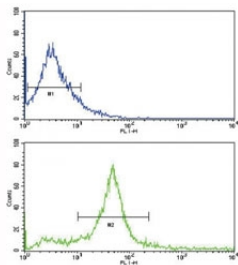
Availability	1-3 business days
Species Reactivity	Human, Mouse
Format	Purified
Clonality	Polyclonal (rabbit origin)
Isotype	Rabbit Ig
Purity	Purified
UniProt	P21860
Applications	Western Blot : 1:1000 IHC (Paraffin) : 1:10-1:50 Flow Cytometry : 1:10-1:50
Limitations	This HER3 antibody is available for research use only.



IHC analysis of FFPE human breast carcinoma with HER3 antibody



Western blot analysis of HER3 antibody and mouse brain lysate. Predicted molecular weight: 140-180 kDa.



Flow cytometric analysis of 293 cells using HER3 antibody (bottom histogram) compared to a negative control (top histogram). FITC-conjugated goat-anti-rabbit secondary Ab was used for the analysis.

Description

HER3/ErbB3, a member of the EGF receptor family, binds and is activated by neuregulins and NTAK. It potentially forms a heterodimer with each of the other ERBB receptors. This protein is predominantly expressed in epithelial tissues and brain. The cytoplasmic part of the receptor may interact with the SH2 or SH3 domains of many signal-transducing proteins. Ligand-binding may increase phosphorylation on tyrosine residues and promote its association with the p85 subunit of phosphatidylinositol 3-kinase. ErbB3 is overexpressed in a subset of human mammary tumors.

Application Notes

Titration of the HER3 antibody may be required due to differences in protocols and secondary/substrate sensitivity.

Immunogen

A portion of amino acids 24-55 from the human protein was used as the immunogen for this HER3 antibody.

Storage

Aliquot the HER3 antibody and store frozen at -20°C or colder. Avoid repeated freeze-thaw cycles.