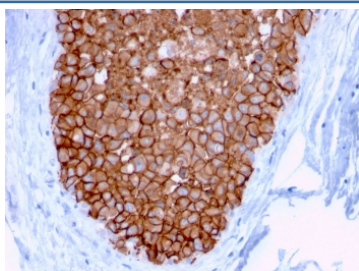


HER2 Antibody / ErbB2 [clone ERBB2/3078] (V7735)

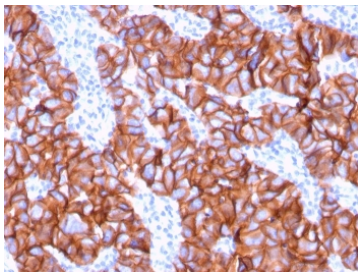
| Catalog No. | Formulation | Size |
|----------------|--|--------|
| V7735-100UG | 0.2 mg/ml in 1X PBS with 0.1 mg/ml BSA (US sourced) and 0.05% sodium azide | 100 ug |
| V7735-20UG | 0.2 mg/ml in 1X PBS with 0.1 mg/ml BSA (US sourced) and 0.05% sodium azide | 20 ug |
| V7735SAF-100UG | 1 mg/ml in 1X PBS; BSA free, sodium azide free | 100 ug |

Bulk quote request

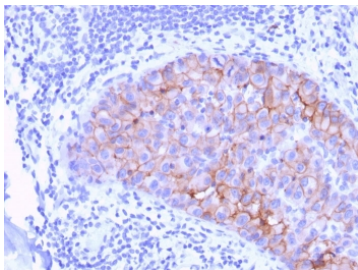
| | |
|---------------------------|--|
| Availability | 1-3 business days |
| Species Reactivity | Human |
| Format | Purified |
| Clonality | Monoclonal (mouse origin) |
| Isotype | Mouse IgG2b, kappa |
| Clone Name | ERBB2/3078 |
| Purity | Protein G affinity chromatography |
| UniProt | P04626 |
| Localization | Cell surface |
| Applications | Immunohistochemistry (FFPE) : 1-2ug/ml |
| Limitations | This HER2 antibody is available for research use only. |



IHC staining of FFPE human breast carcinoma with HER2 antibody (clone ERBB2/3078). HIER: boil tissue sections in pH 9 10mM Tris with 1mM EDTA for 10-20 min and allow to cool before testing.

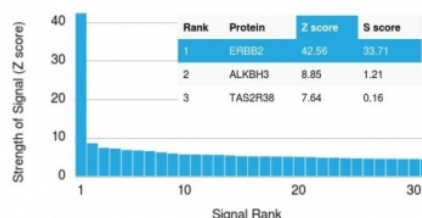


IHC staining of FFPE human breast carcinoma with HER2 antibody (clone ERBB2/3078). HIER: boil tissue sections in pH 9 10mM Tris with 1mM EDTA for 10-20 min and allow to cool before testing.

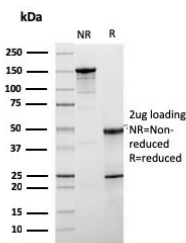


IHC staining of FFPE human breast carcinoma with HER2 antibody (clone ERBB2/3078). HIER: boil tissue sections in pH 9 10mM Tris with 1mM EDTA for 10-20 min and allow to cool before testing.

Human Protein Microarray Specificity Validation



Analysis of HuProt(TM) microarray containing more than 19,000 full-length human proteins using HER2 antibody (clone ERBB2/3078). These results demonstrate the foremost specificity of the ERBB2/3078 mAb. Z- and S- score: The Z-score represents the strength of a signal that an antibody (in combination with a fluorescently-tagged anti-IgG secondary Ab) produces when binding to a particular protein on the HuProt(TM) array. Z-scores are described in units of standard deviations (SD's) above the mean value of all signals generated on that array. If the targets on the HuProt(TM) are arranged in descending order of the Z-score, the S-score is the difference (also in units of SD's) between the Z-scores. The S-score therefore represents the relative target specificity of an Ab to its intended target.



SDS-PAGE analysis of purified, BSA-free HER2 antibody (clone ERBB2/3078) as confirmation of integrity and purity.

Description

Recognizes a protein of 185kDa, which is identified as c-erbB-2/HER-2/neu. Its epitope is localized in the extracellular domain. C-erbB-2/HER-2 is a member of the EGFR family. This MAb is specific and shows minimal cross-reaction with other members of the EGFR-family. Receptors of this family are located on the plasma membrane and consist of an extracellular ligand-binding domain that is connected to a large intracellular domain by a single transmembrane sequence. c-erbB-2/HER-2 protein is over-expressed in a variety of carcinomas especially those of breast and ovary.

Application Notes

Optimal dilution of the HER2 antibody should be determined by the researcher.

Immunogen

A recombinant human HER2 protein fragment within amino acids 311-462 was used as the immunogen for the HER2 antibody. Its epitope is localized in the extracellular domain.

Storage

Store the HER2 antibody at 2-8oC (with azide) or aliquot and store at -20oC or colder (without azide).