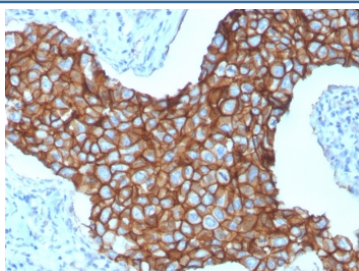


HER-2 Antibody / ErbB2 [clone ERBB2/3257] (V7563)

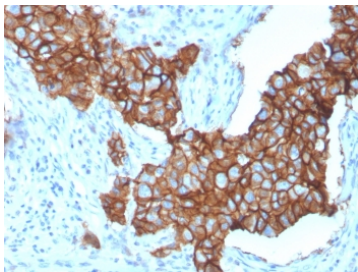
Catalog No.	Formulation	Size
V7563-100UG	0.2 mg/ml in 1X PBS with 0.1 mg/ml BSA (US sourced) and 0.05% sodium azide	100 ug
V7563-20UG	0.2 mg/ml in 1X PBS with 0.1 mg/ml BSA (US sourced) and 0.05% sodium azide	20 ug
V7563SAF-100UG	1 mg/ml in 1X PBS; BSA free, sodium azide free	100 ug
V7563IHC-7ML	Prediluted in 1X PBS with 0.1 mg/ml BSA (US sourced) and 0.05% sodium azide; *For IHC use only*	7 ml

Bulk quote request

Availability	1-3 business days
Species Reactivity	Human
Format	Purified
Clonality	Monoclonal (mouse origin)
Isotype	Mouse IgG2b, kappa
Clone Name	ERBB2/3257
Purity	Protein G affinity chromatography
UniProt	P04626
Localization	Cell surface
Applications	Immunohistochemistry (FFPE) : 1-2ug/ml for 30 min at RT Flow Cytometry : 1-2ug/million cells
Limitations	This HER-2 antibody is available for research use only.

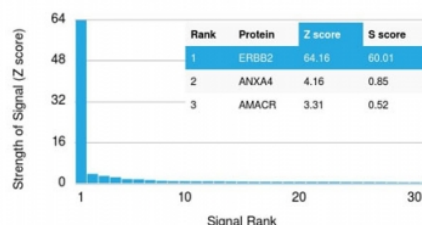


IHC staining of FFPE human breast cancer with HER-2 antibody (clone ERBB2/3257).
HIER: boil tissue sections in pH6, 10mM citrate buffer, for 10-20 min and allow to cool before testing.

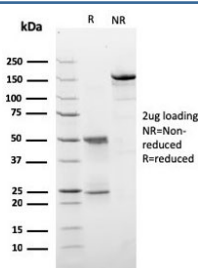


IHC staining of FFPE human breast cancer with HER-2 antibody (clone ERBB2/3257).
HIER: boil tissue sections in pH6, 10mM citrate buffer, for 10-20 min and allow to cool before testing.

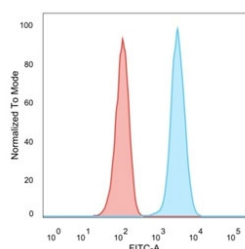
Human Protein Microarray Specificity Validation



Analysis of HuProt(TM) microarray containing more than 19,000 full-length human proteins using HER-2 antibody (clone ERBB2/3257). These results demonstrate the foremost specificity of the ERBB2/3257 mAb.
Z- and S- score: The Z-score represents the strength of a signal that an antibody (in combination with a fluorescently-tagged anti-IgG secondary Ab) produces when binding to a particular protein on the HuProt(TM) array. Z-scores are described in units of standard deviations (SD's) above the mean value of all signals generated on that array. If the targets on the HuProt(TM) are arranged in descending order of the Z-score, the S-score is the difference (also in units of SD's) between the Z-scores. The S-score therefore represents the relative target specificity of an Ab to its intended target.



SDS-PAGE analysis of purified, BSA-free HER-2 antibody (clone ERBB2/3257) as confirmation of integrity and purity.



Flow cytometry staining of PFA-fixed human MCF7 cells with HER-2 antibody;
Red=isotype control, Blue= HER-2 antibody.

Description

Recognizes a protein of 185kDa, which is identified as c-erbB-2/HER-2/neu. Its epitope is localized in the extracellular domain. C-erbB-2/HER-2 is a member of the EGFR family. This MAbs is specific and shows minimal cross-reaction with other members of the EGFR-family. Receptors of this family are located on the plasma membrane and consist of an extracellular ligand-binding domain that is connected to a large intracellular domain by a single transmembrane sequence. c-erbB-2/HER-2 protein is over-expressed in a variety of carcinomas especially those of breast and ovary.

Application Notes

Optimal dilution of the HER-2 antibody should be determined by the researcher.

1. The prediluted format is supplied in a dropper bottle and is optimized for use in IHC. After epitope retrieval step (if required), drip mAb solution onto the tissue section and incubate at RT for 30 min.

Immunogen

A recombinant human HER-2 protein fragment within amino acids 311-462 was used as the immunogen for the HER-2 antibody.

Storage

Store the HER-2 antibody at 2-8°C (with azide) or aliquot and store at -20°C or colder (without azide).