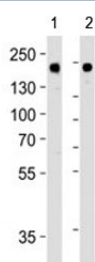


HER-2 Antibody [clone 1423CT594.76.52] (F52968)

| Catalog No. | Formulation | Size |
|---------------|--|---------|
| F52968-0.4ML | In 1X PBS, pH 7.4, with 0.09% sodium azide | 0.4 ml |
| F52968-0.08ML | In 1X PBS, pH 7.4, with 0.09% sodium azide | 0.08 ml |

[Bulk quote request](#)

| | |
|---------------------------|---|
| Availability | 1-3 business days |
| Species Reactivity | Human |
| Format | Purified |
| Clonality | Monoclonal (mouse origin) |
| Isotype | Mouse IgG2b, k |
| Clone Name | 1423CT594.76.52 |
| Purity | Purified |
| UniProt | P04626 |
| Applications | Western Blot : 1:1000 |
| Limitations | This HER-2 antibody is available for research use only. |



Western blot analysis of lysate from 1) MDA-MB-453 and 2) SK-BR-3 cell line using HER-2 antibody at 1:1000.

Description

Protein tyrosine kinase that is part of several cell surface receptor complexes, but that apparently needs a coreceptor for ligand binding. Essential component of a neuregulin-receptor complex, although neuregulins do not interact with it alone. GP30 is a potential ligand for this receptor. Regulates outgrowth and stabilization of peripheral microtubules (MTs). Upon ERBB2 activation, the MEMO1-RHOA-DIAPH1 signaling pathway elicits the phosphorylation and thus the inhibition of GSK3B at cell membrane. This prevents the phosphorylation of APC and CLASP2, allowing its association with the cell membrane. In turn, membrane-bound APC allows the localization of MACF1 to the cell membrane, which is required for microtubule capture and stabilization.

Application Notes

Titration of the HER-2 antibody may be required due to differences in protocols and secondary/substrate sensitivity.

Immunogen

This HER-2 antibody was produced from a mouse immunized with a recombinant protein.

Storage

Aliquot the HER-2 antibody and store frozen at -20oC or colder. Avoid repeated freeze-thaw cycles.