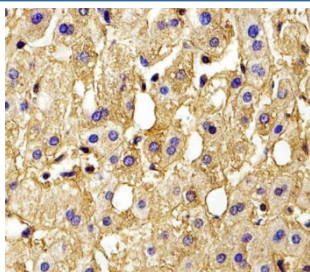


Hemoglobin subunit gamma-2 Antibody / HBG2 (F54741)

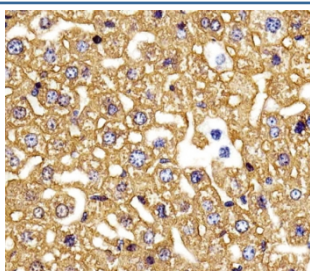
Catalog No.	Formulation	Size
F54741-0.4ML	In 1X PBS, pH 7.4, with 0.09% sodium azide	0.4 ml
F54741-0.08ML	In 1X PBS, pH 7.4, with 0.09% sodium azide	0.08 ml

[Bulk quote request](#)

Availability	1-3 business days
Species Reactivity	Human, Mouse
Format	Purified
Clonality	Polyclonal (rabbit origin)
Isotype	Rabbit IgG
Purity	Antigen affinity purified
UniProt	P69892
Localization	Cytoplasmic
Applications	Immunohistochemistry (FFPE) : 1:25 Flow Cytometry : 1:25 (1x10 ⁶ cells) Western Blot : 1:500-1:1000
Limitations	This Hemoglobin subunit gamma-2 antibody is available for research use only.



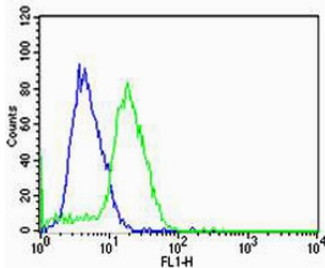
IHC testing of FFPE human liver tissue with Hemoglobin subunit gamma-2 antibody.
HIER: steam section in pH6 citrate buffer for 20 min and allow to cool prior to staining.



IHC testing of FFPE mouse liver tissue with Hemoglobin subunit gamma-2 antibody.
HIER: steam section in pH6 citrate buffer for 20 min and allow to cool prior to staining.



Western blot testing of human brain tissue lysate with Hemoglobin subunit gamma-2 antibody. Predicted molecular weight ~16 kDa.



Flow cytometry testing of human U-87 MG cells with Hemoglobin subunit gamma-2 antibody; Blue=isotype control, Green= Hemoglobin subunit gamma-2 antibody.

Description

Gamma chains make up the fetal hemoglobin F, in combination with alpha chains. [UniProt]

Application Notes

The stated application concentrations are suggested starting points. Titration of the Hemoglobin subunit gamma-2 antibody may be required due to differences in protocols and secondary/substrate sensitivity.

Immunogen

A portion of amino acids 101-133 from the human protein was used as the immunogen for the Hemoglobin subunit gamma-2 antibody.

Storage

Aliquot the Hemoglobin subunit gamma-2 antibody and store frozen at -20oC or colder. Avoid repeated freeze-thaw cycles.